

26



**FINOMIX<sup>®</sup>**  
DRY MORTARS

**building trusting relationships**

**PRODUCT CATALOGUE 2026**



## building trusting relationships



**FINOBETON S.A.** has been active in the construction sector for over **40 years**, initially operating in the fields of ready-mix concrete, floor screeds, asphalt materials, and quarry products.

As part of its continuous growth and business expansion strategy, the **FINOMIX** dry mortars production unit was inaugurated in Chania in 2008. The high-quality marble powder produced at the company's privately owned quarry, combined with the state-of-the-art production facility, formed the foundation for **FINOMIX's** dynamic and successful entry into the dry mortars market.

The fully automated, German-technology plant is designed in a vertical configuration to ensure maximum productivity and reduced energy consumption. The recent expansion of the production facilities boosting daily capacity to over 1,000 tons through two independent production lines, along with the addition of more than 2,500 m<sup>2</sup> of logistics facilities, enables the company to efficiently meet continuously growing market demand.





**FINOMIX** products are distributed in the Greek and international markets through the company's distribution centers in Chania, Heraklion (Crete) and Athens, as well as through an extensive network of partners and retail outlets. Providing high-level services, both before and after sales, is a key growth pillar for **FINOMIX**.

The company continuously invests in its human resources, employing qualified personnel who offer technical support and specialized training on the optimal application of its products. Through its state-of-the-art Research & Development Department, **FINOMIX** ensures the continuous improvement and upgrading of existing products, as well as the development of new, high-quality and user-friendly solutions that meet the evolving demands of the construction industry.





The company implements a quality management system in accordance with the international standard ISO 9001:2015 for the design, production and distribution of **FINOMIX** products, which bear CE marking where applicable. In parallel, it applies an environmental management system certified according to ISO 14001:2015, and an occupational health and safety management system in accordance with ISO 45001:2018.

Environmental responsibility and care for people are integral parts of the company's philosophy. Through responsible operational practices, **FINOMIX** actively reduces its environmental footprint. The installation of two photovoltaic power plants with a total capacity of over 2 MW serves as tangible proof of its sustainable development strategy, covering almost all of its energy needs through renewable energy sources.





**FINOMIX**<sup>®</sup>

# complete building systems



refractory mortars  
for fireplaces & stoves

marble & granite  
installation mortars

plastering systems for internal  
& external applications

waterproofing & tile  
installation systems  
for terraces & balconies

aerated concrete  
building mortars

glass blocks  
building mortars

impregnation  
products  
& varnishes

stone building  
& grouting mortars

pool waterproofing  
& lining systems

floor filling  
& levelling  
systems

coloured  
decorative plasters

masonry mortars

mortars for underfloor heating installations

systems for waterproofing & thermal insulation of top roof/terrace

tile installation & grouting systems for internal applications

microcement mortar systems for floor & wall applications

tile installation systems for wet areas

mortars for the installation of roof tiles

**Finoclima**® certified external thermal insulation composite systems

masonry repair mortars

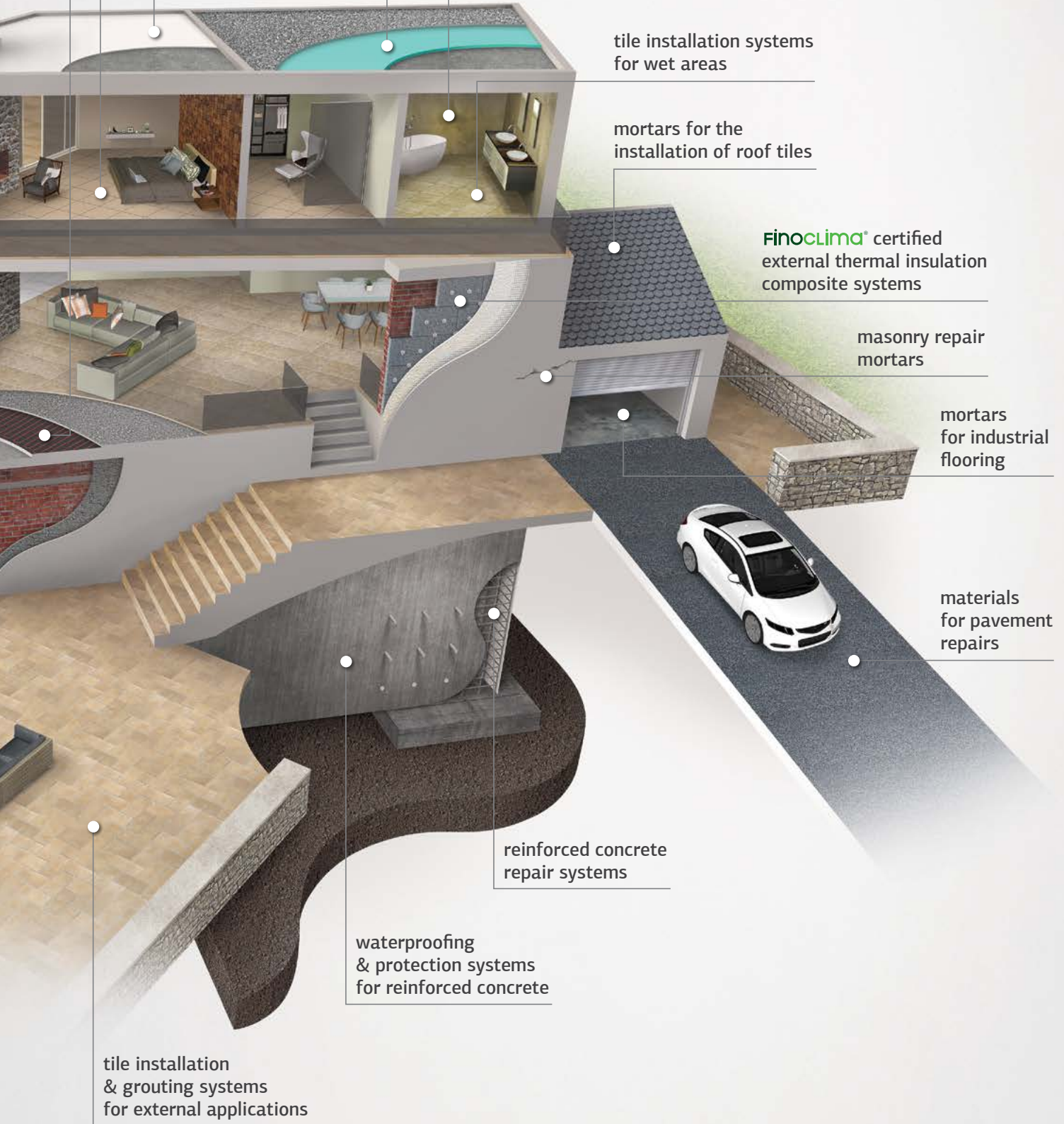
mortars for industrial flooring

materials for pavement repairs

reinforced concrete repair systems

waterproofing & protection systems for reinforced concrete

tile installation & grouting systems for external applications



# contents



<b>1. repairing mortars &amp; putties</b> .....	9
1.1 repairing mortars .....	10
1.2 putties .....	15



<b>2. waterproofing &amp; sealing mortars</b> .....	17
2.1 waterproofing & sealing mortars .....	18
2.2 auxiliary materials .....	22



<b>3. tile adhesives &amp; grouts</b> .....	25
3.1 tile adhesives .....	30
3.2 special application adhesives .....	34
3.3 tile grouts & cleaners .....	35
3.4 auxiliary materials .....	36



<b>4. floor screeds</b> .....	39
4.1 floor screeds .....	40
4.2 auxiliary materials .....	42



<b>5. Finoclima® external thermal insulation composite systems</b> .....	43
5.1 Finoclima® products .....	44
5.2 auxiliary materials .....	49



<b>6. decorative mortars</b> .....	51
6.1 water repellent coloured renders .....	52
6.2 microcement mortars .....	52
6.3 impregnation products & varnishes .....	56



<b>7. building mortars &amp; premixed renders</b> .....	59
7.1 building mortars .....	60
7.2 premixed renders .....	62
7.3 auxiliary materials .....	64



<b>8. primers</b> .....	65
-------------------------	----

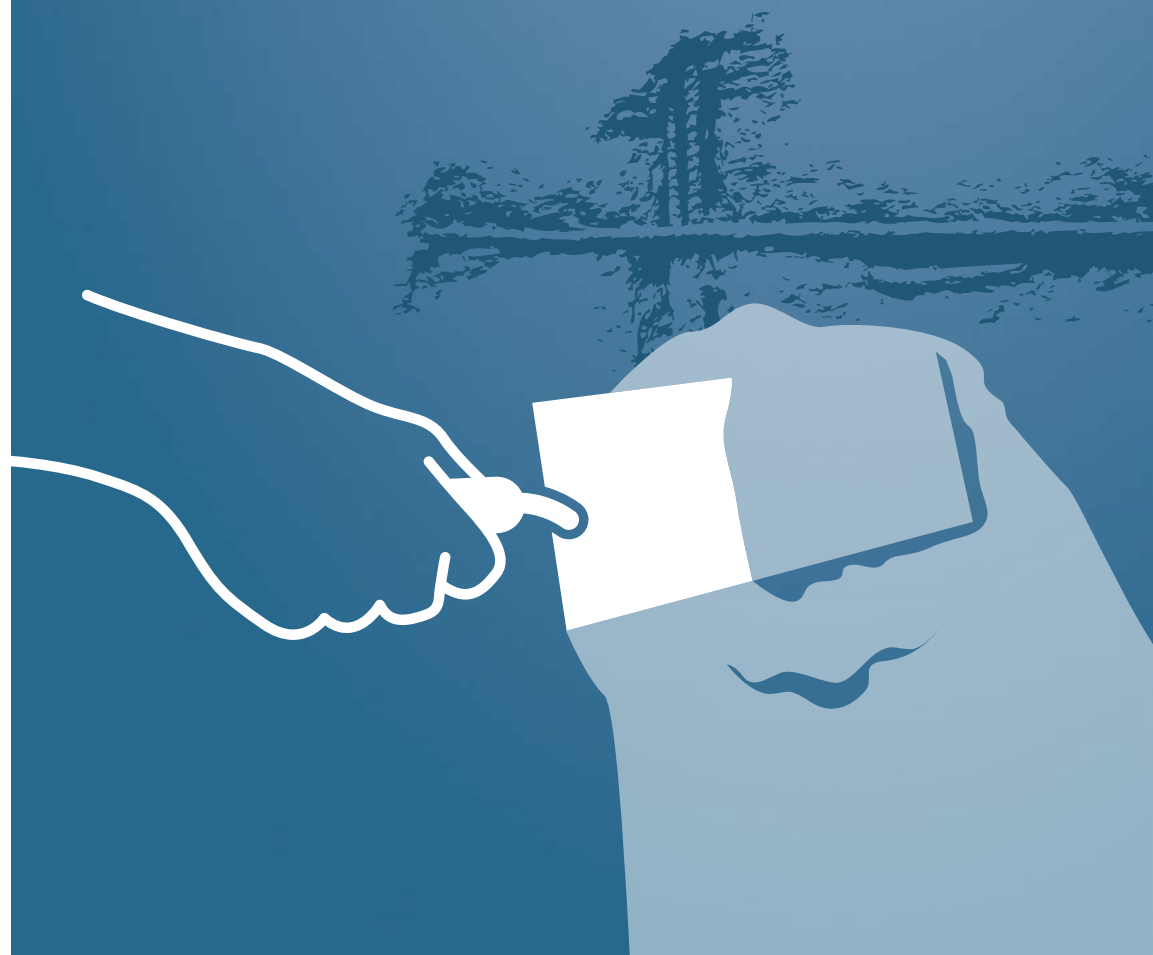


<b>9. mortar &amp; concrete improvers</b> .....	69
---	----

# 1

## ■ repairing mortars & putties

- repairing mortars
- putties





# 1.1 repairing mortars



## RP 3000

### fast-setting fiber-reinforced polymer-modified one-coat repairing render

**DESCRIPTION:** Fast setting and drying, polymer-modified, fiber-reinforced, cement-based mortar, for repairs of render surfaces on old and new structures.

It exhibits high mechanical strengths, minimal shrinkage, strong adhesion to the substrate and resistance to moisture. Classified as general purpose mortar (GP) type CS II, W1 rendering mortar according to European standard EN 998-1.

**APPLICATIONS:** Ideal for quick repairs and restoration of render surfaces, as well as for fixing broken corners in masonry and other minor repairs. Also suitable for repairing several defects created during construction works, e.g. electrical, plumbing, framing works. Suitable for interior and exterior applications.

PACKAGING	ITEMS/BOX	ITEMS/PAL.
5 kg plastic bag	4	144
25 kg paper bag		60

**CONSUMPTION:** Approximately 12-14 kg/m<sup>2</sup> for a 1 cm thick layer.



## RP 4000

### fiber-reinforced high strength repairing mortar

(for layers up to 6 cm thick)

■ Class R4 ■

**DESCRIPTION:** Cement-based repairing mortar, modified with silica fume, polymers and synthetic fibers. It exhibits very high mechanical properties, modulus of elasticity similar to high-specifications concrete, very good dimensional stability and high bonding strength to concrete and steel.

Due to its strong thixotropic properties, it can be applied in thicknesses up to 6 cm in one layer.

Classified as class CC R4 cementitious mortar for the repair of concrete structures according to European standard EN 1504-3.

**APPLICATIONS:** Suitable for repairing concrete elements of high quality due to its similar high modulus of elasticity. It can be applied by hand, with a trowel or a suitable piston or worm-screw type spraying machine, on horizontal, vertical or overhead surfaces.

PACKAGING	ITEMS/BOX	ITEMS/PAL.
5 kg plastic bag	4	144
25 kg paper bag		60

**CONSUMPTION:** Approximately 18-19 kg/m<sup>2</sup> for a 1 cm thick layer.



## RP 4000 rapid

### fast-setting fiber-reinforced high strength repairing mortar

(for layers up to 3 cm thick)

■ Class R3 ■

**DESCRIPTION:** Fast-setting, fiber-reinforced, cement-based mortar, for demanding repair works of concrete elements. It exhibits fast setting and hardening, development of high initial mechanical strengths, thus significantly reducing repairing time, as well as zero shrinkage, reduced water permeability and excellent adhesion to the substrate. Its thixotropic workability allows the application of layers up to 3 cm thick. Classified as class CC R3 cementitious mortar for the repair of concrete structures according to European standard EN 1504-3.

**APPLICATIONS:** Suitable for quick repairing of concrete elements, anchoring, patching of cavities, groove formation, etc. It can be applied with a trowel on floors, walls or ceilings and generally in any case where high strength and fast application are required.

It is ideal when application has to take place at low ambient temperatures (>5°C).

PACKAGING	ITEMS/BOX	ITEMS/PAL.
5 kg plastic bag	4	144
20 kg paper bag		72

**CONSUMPTION:** Approximately 16-17 kg/m<sup>2</sup> for a 1 cm thick layer.



## RP 4100

### fiber-reinforced fine-grained medium strength repairing mortar

(for layers up to 5 cm thick)

■ Class R3 ■

**DESCRIPTION:** Cement-based, fine-grained repairing mortar, modified with silica fume, polymers and synthetic fibers. It exhibits high mechanical properties, modulus of elasticity similar to medium-specifications concrete, very good dimensional stability and high bonding strength to concrete and steel. Due to its high thixotropic properties, it can be applied in thicknesses up to 5 cm in one layer, while the fine grain size allows perfect final finish of the repaired surfaces.

Classified as class CC R3 cementitious mortar for the repair of concrete structures according to European standard EN 1504-3.

**APPLICATIONS:** Suitable for repairing concrete elements of low to medium quality due to the similar low modulus of elasticity. It can be applied by hand, with a trowel or a suitable piston or worm-screw type spraying machine, on horizontal, vertical or overhead surfaces.

PACKAGING	ITEMS/PAL.
25 kg paper bag	60

**CONSUMPTION:** Approximately 16-17 kg/m<sup>2</sup> for a 1 cm thick layer.



## RP 4200

### fiber-reinforced cementitious mortar for non-structural repairs of concrete & masonry

(for layers up to 5 cm thick)

■ Class R2 ■

**DESCRIPTION:** Polymer-modified, cement-based, fiber-reinforced mortar, containing silica fume. It exhibits mechanical properties and modulus of elasticity compatible to low-strength concrete and masonry, very good dimensional stability and high bonding strength to common substrates. Due to its high thixotropic properties, it can be applied in thicknesses up to 5 cm in one layer, providing an excellent finish to the final surface. Classified as class PCC R2 cementitious mortar for non-structural repairs of concrete structures according to European standard EN 1504-3, as well as class GP CSIV, W2 general purpose rendering mortar according to European standard EN 998-1.

**APPLICATIONS:** Suitable for non-structural repairs of low-quality concrete elements due to the similar low modulus of elasticity, and also for the repair, pointing and rendering of masonry. It can be applied by hand, with a trowel or a suitable piston or worm-screw type spraying machine on horizontal or vertical surfaces.

PACKAGING	ITEMS/PAL.
25 kg paper bag	60

**CONSUMPTION:** Approximately 16-18 kg/m<sup>2</sup> for a 1 cm thick layer.



## RP 4300 stuccorep

### polymer-modified cementitious pore sealer and smoothing coat for concrete and rendered surfaces (for layers up to 5 mm thick)

■ Class R2 ■

**DESCRIPTION:** Cement-based, fiber-reinforced mortar, modified with synthetic polymers, for minor repairs and pore sealing on concrete and rendered surfaces.

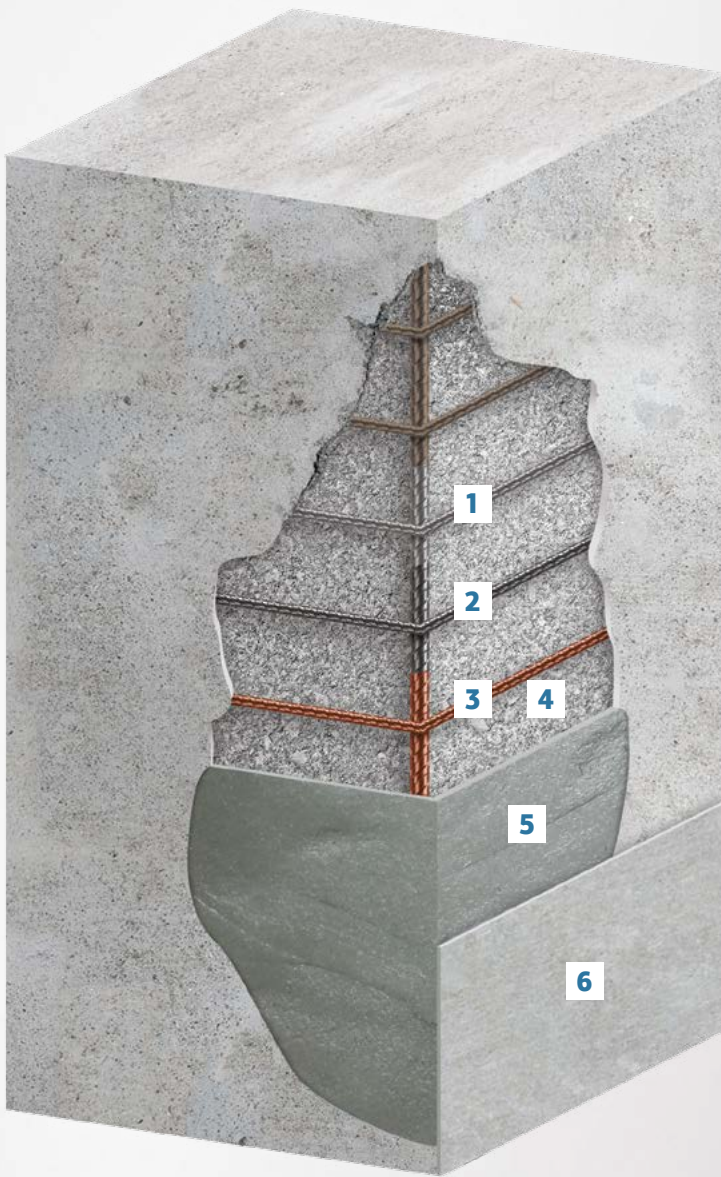
It exhibits high bonding strength to common substrates (concrete, render) and resistance to moisture. Due to its high thixotropic properties, it can be applied in thicknesses up to 5 mm in one layer covering imperfections without sagging or cracking, providing an excellent finish to the final surface.

Classified as class PCC R2 cementitious mortar for non-structural repairs of concrete structures according to European standard EN 1504-3.

**APPLICATIONS:** It is used as a pore sealer for concrete surfaces and also as a smoothing coat over concrete and rendered surfaces repairing hairline cracks, irregularities and other minor defects of the surface. It is applied by hand, with a trowel or a spatula on horizontal or vertical surfaces. Suitable for both interior and exterior applications.

PACKAGING	ITEMS/PAL.
25 kg paper bag	60

**CONSUMPTION:** Approximately 1.3-1.5 kg/m<sup>2</sup> for a 1 mm thick layer.



# integrated system for the repair of reinforced concrete elements

**1** **REMOVAL OF DAMAGED CONCRETE - CLEANING OF OXIDIZED REINFORCEMENT**

**2** **APPLICATION OF HYBRID RUST CONVERTER**

**RP 4030 rust-converter hybrid**

Hybrid rust converter with parallel passivating & protective action

**3** **APPLICATION OF ANTI-CORROSIVE COATING FOR REINFORCING ELEMENTS**

**RP 4020 corrosion protect**

Cementitious anti-corrosive coating for concrete reinforcing elements & bonding bridge

**4** **SPRAYING OF MIGRATING CORROSION INHIBITOR**

**RP 4010-MCI ferro protect**

Migrating corrosion inhibitor

**5** **CONCRETE RESTORATION**

**RP 4000**

Fiber-reinforced high strength repairing mortar (for layers up to 6 cm thick) Class R4

**RP 4000 rapid**

Fast-setting fiber-reinforced high strength repairing mortar (for layers up to 3 cm thick) Class R3

**RP 4100**

Fiber-reinforced fine-grained medium strength repairing mortar (for layers up to 5 cm thick) Class R3

**6** **FINISHING MORTAR APPLICATION (OPTIONAL)**

**RP 4300 stuccorep**

Polymer-modified cementitious pore sealer and smoothing coat for concrete surfaces (for layers up to 5 mm thick) Class R2



## RP 4010•MCI ferro protect

migrating corrosion inhibitor

**DESCRIPTION:** Water-based solution with very high penetrating ability that inhibits corrosion of steel reinforcement of concrete structures.

It penetrates deeply in concrete structures creating a passivation layer (anodic inhibitor) around the steel reinforcement, thus protecting from chloride-induced corrosion and increasing lifespan.

It fully complies to principle 11 (method 11.3) of the European standard EN 1504-9.

**APPLICATIONS:** It is applied preventively during concrete repair works, as well as for the protection of concrete structures that are exposed to corrosive environments (coastal areas, swimming pools, water reservoirs, fair-faced concrete, bridges, etc.).

PACKAGING	ITEMS/BOX	ITEMS/PAL.
1 kg plastic container	14	504
5 kg plastic container		112
20 kg plastic container		39

**CONSUMPTION:** Approximately 0.5-1.0 kg/m<sup>2</sup>.



## RP 4020 corrosion protect

cementitious anti-corrosive coating for concrete reinforcing elements & bonding bridge

**DESCRIPTION:** Cement-based mortar, modified with silica fume and polymers, for the protection of steel reinforcement against corrosion and also as a bonding bridge.

Classified as product for reinforcement corrosion protection according to European standard EN 1504-7.

**APPLICATIONS:** Used in repair works of reinforced concrete for protecting the corroded reinforcement or preventively as a barrier coating protecting the reinforcement when it is exposed (or will be exposed) to a corrosive environment.

Moreover, as a bonding bridge between old and new concrete or other repairing mortar.

Exhibits excellent adhesion to reinforcing steel, concrete and mortars.

PACKAGING	ITEMS/BOX	ITEMS/PAL.
1 kg plastic container	12	432
5 kg plastic container		96

**CONSUMPTION:**

- As anti-corrosive coating: 0.10-0.15 kg/m of reinforcing steel (depending on the steel diameter) for a 1 mm thick layer (application in 2 layers).
- As bonding bridge: 1.50-2.00 kg/m<sup>2</sup> for a 1 mm thick layer.



## RP 4030 rust•converter hybrid

hybrid rust converter with parallel passivating & protective action

**DESCRIPTION:** Ready-to-use water-soluble rust conversion primer. It is composed of a hybrid acrylic-epoxy polymer that combines excellent rust converting properties and adhesion to metals, forming a film that blocks the migration of oxygen and water to the substrate.

It is applied directly on rusted surfaces converting them to a rust-inhibiting ion complex while at the same time it passivates the substrate providing protection from further corrosion.

Classified as product for reinforcement corrosion protection according to European standard EN 1504-7.

**APPLICATIONS:** It is applied for rust conversion and protection on metal surfaces such as steel rebar of concrete elements, metal tools and machinery, and in marine applications.

PACKAGING	ITEMS/BOX	ITEMS/PAL.
0.25 lt plastic container	48	
1 lt plastic container	14	504

**CONSUMPTION:** Indicative consumption: approximately 0.2 lt/m<sup>2</sup>. Consumption depends on the type of application.



## RP 4800 gunitite

high strength, sprayed cementitious mortar for structural repairs of concrete structures  
 ■ Class R3 ■

**DESCRIPTION:** Cement-based mortar containing silica fume, for the repair and structural strengthening of concrete structures, as well as the support of rock and excavation, using the dry or wet spraying process. It is produced in two types: with maximum aggregate size 4 mm and 10 mm.

RP 4800 GUNITITE meets the requirements of the Hellenic Technical Specification ELOT TS 1501-14-01-14-00 and the EFNARC - European Specification for Sprayed Concrete, for concrete class C32/40.

Classified as class CC R3 cementitious mortar for the repair of concrete structures according to European standard EN 1504-3.

**APPLICATIONS:** Suitable for large-volume repair and structural strengthening of concrete structures, structural support of masonry and the support of rock and excavation.

PACKAGING	ITEMS/PAL.
30 kg paper bag	48

**CONSUMPTION:** Indicatively, 20-22 kg/m<sup>2</sup> for a 1 cm thick layer. Consumption is strongly affected by the surface and the application method.



## G•RP 4250

non-shrink castable cementitious grout  
 ■ Class R4 ■

**DESCRIPTION:** Cement-based, shrinkage-compensated, highly flowable grouting mortar. It exhibits very high initial and final mechanical strengths, shrinkage compensation, no bleeding and segregation, high fluidity and low water permeability.

Classified as grouting mortar according to EN 1504-6 and as class CC R4 cementitious mortar for the repair of concrete structures according to European standard EN 1504-3.

**APPLICATIONS:** It is used wherever a high performance non-shrinking grout is necessary:

- Precision grouting of machinery.
- Grouting underneath structural steelwork.
- Filling voids and cavities.
- Repairs of concrete elements by casting using formworks.
- Anchoring of steel reinforcement.

PACKAGING	ITEMS/PAL.
25 kg paper bag	60

**CONSUMPTION:** 25 kg of dry material yield approximately 12.5 lt of volume.



## water•plug

ultra fast-setting cementitious water plugging mortar

**DESCRIPTION:** One-component, ultra fast setting and hardening, cement-based mortar, for sealing water leakages in concrete structures, even under pressure, as well as for ultra-fast anchorings.

Once mixed with water it forms a thixotropic paste that sets within seconds regardless the ambient conditions and which doesn't wash out in the presence of water under pressure for as long as it takes to set.

It exhibits excellent adhesion to concrete and zero shrinkage.

**APPLICATIONS:** Ideal for the instant sealing of water leaks under pressure in tanks, swimming pools, underground structures, underground tunnels, etc., for the sealing of cracks and holes, as well as for the sealing of rigid joints between walls and floors.

Also for fast repairing works of masonry or concrete prior to the application of brushable cementitious sealing mortars (HYDROSEAL 5000, HYDROSEAL 6000 1K•FLEX, HYDROSEAL 7000 FIBRO•FLEX or HYDROSEAL 8000 SUPER•ELASTIC).

PACKAGING	ITEMS/BOX	ITEMS/PAL.
5 kg plastic bag	4	144

**CONSUMPTION:** Approximately 16-17 kg/m<sup>2</sup> for a 1 cm thick layer.



## DP-5350

### water repellent impregnation against capillary rising damp

**DESCRIPTION:** Ready-to-use, water-based, silicate emulsion, for the protection against capillary rising damp. It doesn't corrode the steel reinforcement of concrete.

**APPLICATIONS:** It is applied mainly by injection into masonry, or stone, brick or concrete structures, creating a horizontal, water repellent barrier against capillary rising damp. Alternatively, when applied on the surface of the masonry it creates a crystal waterproofing that protects from moisture ingress.

PACKAGING	ITEMS/PAL.
5 kg plastic container	112
20 kg plastic container	39

**CONSUMPTION:** It depends on the absorptivity of the substrate. Indicatively, for a normal absorbing masonry it is required approximately 15-16 kg/m<sup>2</sup> in cross section.



## cold patch

### cold asphalt patch & pothole repair

**DESCRIPTION:** Ready-to-use cold asphalt, for repairing damages to the asphalt pavement. It exhibits increased elastic properties, excellent adhesion to the substrate without requiring a bonding layer and great resistance to weather stressing and time. It is produced according to the regulations of the American organization ASTM. Also available in bulk.

**APPLICATIONS:** It is used for repairing potholes and cracks on asphalt or concrete pavements. It is also used to restore asphalt pavements after core-sampling for quality testing purposes.

PACKAGING	ITEMS/PAL.
25 kg plastic bag	50
25 kg plastic container	36

**CONSUMPTION:** Approximately 20-22 kg/m<sup>2</sup> for a 1 cm thick layer.



## 1.2 putties



## foam putty

### acrylic foam-putty for quick patching of cracks and holes

**DESCRIPTION:** Ready-to-use, ultra lightweight acrylic putty, for quick patching of cracks and holes (up to 50 mm deep).

Ready to be painted after about 30 minutes.

It exhibits great workability, increased adhesion strength and minimal shrinkage.

**APPLICATIONS:** Suitable for quick patches of cracks and holes on surfaces made of plaster, concrete, wood, gypsum boards, etc., indoors and outdoors.

PACKAGING	ITEMS/BOX	ITEMS/PAL.
0.25 lt plastic container	30	480
1 lt plastic container	12	192
4 lt plastic container		48

**CONSUMPTION:** It depends on the application.



## SC 01

### extra-fine graded polymer-modified spatula putty

**DESCRIPTION:** Extra-fine graded, polymer-modified cementitious mortar, for smoothing and preparing surfaces that are going to be painted.

It exhibits excellent workability, it is easily sanded and produces a perfectly smooth final surface of very high whiteness.

Classified as general purpose mortar (GP) type CS II, W0 according to European standard EN 998-1.

**APPLICATIONS:** Used for smoothing and preparing surfaces that are going to be painted or in any other case where a perfectly smooth surface is required.

It is applied by spatula or putty knife, or a suitable spraying machine (airless), on renders, gypsum boards, cement boards, fiber boards, concrete, instead of oil putties and similar materials.

Also suitable for minor repairing works like fixing micro-cracks on render surfaces.

Suitable for interior and exterior applications.

PACKAGING	ITEMS/BOX	ITEMS/PAL.
4 kg plastic bag	4	144
20 kg paper bag		60

**CONSUMPTION:** Approximately 1.0-1.2 kg/m<sup>2</sup> for a 1 mm thick layer.

*new*



## SC 02

### polymer-modified cementitious repair putty

(for filling surface imperfections up to 20 mm deep)

**DESCRIPTION:** Polymer-modified cementitious repair mortar, for filling and smoothing surfaces prior to painting.

It exhibits high resistance to moisture, increased surface hardness, it doesn't crack and it is applicable in thick layers (up to 20 mm) without sagging.

It does not impair the breathability of the substrate.

Classified as general purpose rendering mortar (GP) type CS III, W0, A1 according to European standard EN 998-1.

**APPLICATIONS:** Ideal for filling and smoothing surfaces made of concrete, render or AAC blocks, allowing the repair of all types of surface imperfections.

It can be applied in 1-2 layers with a thickness of 1-20 mm per layer.

Suitable for interior and exterior applications.

PACKAGING	ITEMS/BOX	ITEMS/PAL.
5 kg plastic bag	4	144
20 kg paper bag		72

**CONSUMPTION:** Approximately 1.2-1.5 kg/m<sup>2</sup> for a 1 mm thick layer.

# 2

## waterproofing & sealing mortars

- waterproofing & sealing mortars
- auxiliary materials





## 2.1 waterproofing & sealing mortars



### hydroseal 5000

#### brushable cementitious sealing slurry

**DESCRIPTION:** One-component, cement-based mortar, modified with polymer resins and silica fume, for waterproofing concrete structures and masonry against moisture and water ingress. It exhibits high adhesion to substrate and excellent waterproofing properties against positive and light negative hydrostatic pressures. Classified as coating mortar (C) for the protection of concrete structures according to European standard EN 1504-2.

**APPLICATIONS:** It is used for the waterproofing and protection of basements, water tanks, foundations, lift rooms, etc. It is applied with a brush or a spatula in two or more layers, on concrete elements and masonry (bricks, cement blocks, stone), in old and new structures.

PACKAGING	ITEMS/BOX	ITEMS/PAL.
5 kg plastic bag WHITE/GREY	4	144
25 kg paper bag WHITE/GREY		60

**CONSUMPTION:** Approximately 1.2-1.5 kg/m<sup>2</sup> for a 1 mm thick layer.



### hydroseal 6000 1K-flex

#### flexible one-component fiber-reinforced waterproofing cementitious slurry

##### ■ Class A3 ■

**DESCRIPTION:** One-component, flexible, fiber-reinforced cementitious mortar, modified with polymer resins, for waterproofing concrete structures and masonry against moisture and water ingress. It exhibits high adhesion to substrate and excellent waterproofing properties against positive and light negative hydrostatic pressures. It exhibits high crack-bridging performance for cracks >0.50 mm (class A3). Classified as coating mortar (C) for the protection of concrete structures according to European standard EN 1504-2.

**APPLICATIONS:** It is applied in two or more layers, for waterproofing of substrates to be covered with ceramic tiles (swimming pools, baths, balconies, etc.), foundation walls to be backfilled in ground, basement walls and floors against negative hydrostatic pressure, for the protection of concrete structures against carbonation and water ingress through hairline cracks and pores.

It is applied with brush or trowel on common substrates, e.g. concrete, masonry, natural stone, renders, etc.

PACKAGING	ITEMS/PAL.
20 kg paper bag	60

**CONSUMPTION:** Approximately 1.2-1.3 kg/m<sup>2</sup> for a 1 mm thick layer.



ready  
-to-  
use



### hydroseal 6500 aqua-protect

#### liquid fast-drying waterproofing membrane for non-exposed surfaces

**DESCRIPTION:** Ready-to-use, solvent-free, liquid elastomeric membrane, for the waterproofing of moist spaces that are going to be covered with ceramic tiles and natural stones.

After drying, it forms a highly elastic seamless membrane, able to bridge cracks  $\geq 0.75$  mm at  $-5^{\circ}\text{C}$ , impermeable from water and vapours.

It is classified as liquid-applied waterproofing product type DM O1 according to EN 14891.

**APPLICATIONS:** It is applied for seamless waterproofing of surfaces that are going to be covered with ceramic tiles, natural stones and mosaic tiles, in bathrooms, showers, balconies, terraces and damp areas in general. It is applied on concrete, masonry, gypsum-boards, cement-boards, cementitious floor-screeds and cementitious renders, for indoor and outdoor applications.

PACKAGING	ITEMS/PAL.
5 kg plastic container	96
15 kg plastic container	44

**CONSUMPTION:** Approximately 1.0-1.3 kg/m<sup>2</sup> in two layers, depending on the substrate's type.



## hydroseal 7000 fibro-flex

flexible fiber-reinforced 2-component cementitious waterproofing mortar

■ Class A4 ■

**DESCRIPTION:** Flexible, fiber-reinforced, 2-component cementitious mortar, for waterproofing of substrates against moisture or water under pressure (positive and negative pressures). It forms a flexible seamless membrane, impermeable to water, able to withstand contraction-expansions and vibrations of the substrate. It exhibits excellent crack-bridging performance for cracks >1.25 mm (class A4) at +23°C and >0.50 mm (class A3) at -10°C. Classified as coating mortar (C) for the protection of concrete structures according to European standard EN 1504-2.

**APPLICATIONS:** It is used for:

- Waterproofing of concrete water tanks.
- Waterproofing in baths, showers, swimming pools, roofs, balconies, etc., before the installation of ceramic tiles or other decorative layers.
- Protection of concrete, masonry and render surfaces from the ingress of moisture and other corroding agents.
- Protection of concrete surfaces exposed to saline environment.

PACKAGING	ITEMS/PAL.
33 kg GREY (25 kg A + 8 kg B)	60(A) + 60(B)

**CONSUMPTION:** Approximately 1.5-1.6 kg/m<sup>2</sup> for a 1 mm thick layer.



## hydroseal 8000 super-elastic

flexible 2-component brushable sealing slurry

■ Class A5 ■

**DESCRIPTION:** Flexible, brushable, 2-component cementitious mortar, for seamless waterproofing of substrates against moisture or water under pressure (positive and negative pressures). It exhibits excellent crack-bridging performance for cracks >2.50 mm (class A5) at +23°C and >1.25 mm (class A4) at -10°C. Classified as coating mortar (C) for the protection of concrete structures according to European standard EN 1504-2.

**APPLICATIONS:** It is applied in two or more layers, for waterproofing of surfaces made of concrete, bricks, AAC blocks, cement-blocks, etc., as well as cement boards, metal, wood, etc.

Ideal for waterproofing against water under pressure and substrates that have the tendency to develop (or already have) micro-cracks due to contraction-expansions or vibrations (terraces, balconies, inverted roofs, water tanks, swimming pools, etc.).

PACKAGING	ITEMS/PAL.
35 kg WHITE/GREY (25 kg A + 10 kg B)	60(A) + 60(B)

**CONSUMPTION:** Approximately 1.5-1.7 kg/m<sup>2</sup> for a 1 mm thick layer.



## hydroflex cool-roof

flexible UV-resistant 2-component cementitious waterproofing mortar

■ Class A5 ■

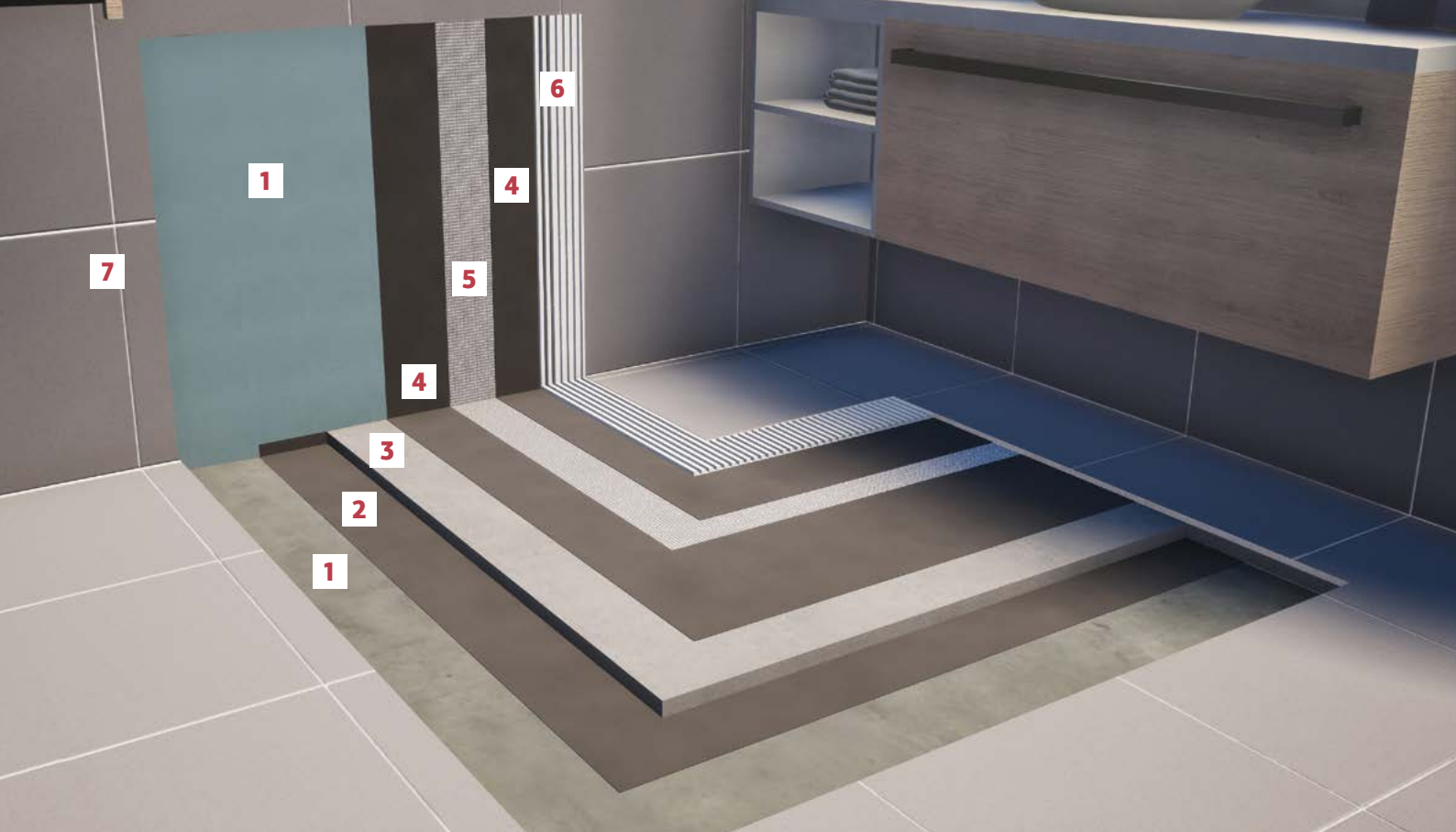
**DESCRIPTION:** Ultra-white, flexible, 2-component cementitious mortar, for seamless waterproofing of exposed and non-exposed surfaces, protecting them against moisture and water under pressure (positive and negative pressures). It exhibits high UV resistance and excellent crack-bridging performance for cracks >2.50 mm (class A5) at +23°C and >1.25 mm (class A4) at -10°C. Classified as coating mortar (C) for the protection of concrete structures according to European standard EN 1504-2.

**APPLICATIONS:** It is applied in two or more layers, for the waterproofing of roofs, and as a cool roof-coating since it exhibits high solar reflectance, reducing the cooling costs during the summer months. It is used for waterproofing of surfaces made of concrete, bricks, AAC blocks, cement-blocks, etc., as well as cement boards, metal, wood, etc. Ideal for waterproofing against water under pressure and substrates that have the tendency to develop (or already have) micro-cracks due to contraction-expansions or vibrations (terraces, balconies, inverted roofs, water tanks, swimming pools, etc.).

PACKAGING	ITEMS/PAL.
35 kg WHITE (25 kg A + 10 kg B)	60(A) + 60(B)

**CONSUMPTION:** Approximately 1.2-1.4 kg/m<sup>2</sup> for a 1 mm thick layer.

# Integrated system for bathrooms



## 1 SUBSTRATE

## 2 & 4 WATERPROOFING

### hydroseal 6000 1K-flex

Flexible one-component fiber-reinforced waterproofing cementitious slurry  
Class A3

### hydroseal 6500 aqua-protect

Liquid fast-drying waterproofing membrane for non-exposed surfaces

### hydroseal 7000 fibro-flex

Flexible fiber-reinforced 2-component cementitious waterproofing mortar  
Class A4

### hydroseal 8000 super-elastic

Flexible 2-component brushable sealing slurry  
Class A5

## 3 FLOOR LEVELLING

### FS 100 screed

Fiber-reinforced cementitious levelling floor screed  
(for layers up to 10 cm thick)

### FS 600 fast-screed

Fast-curing low-shrinkage cement mortar for the construction and levelling of floors  
(for 2-6 cm thick layers)

## 5 WATERPROOFING REINFORCEMENT

### fiberglass mesh for reinforcing waterproofing layers

Flexible alkali-resistant fiberglass mesh. Weight 60 g/m<sup>2</sup>.

### polyester fabric for reinforcing waterproofing layers

Strong polyester fabric. Weight 50 g/m<sup>2</sup>.

## 6 TILE INSTALLATION

### KP 250 special

High performance polymer-modified tile adhesive  
Type C2 TE

### KP 300 flexy

Elastic polymer-modified tile adhesive - Type C2 TE S1

### KP 500 elastic

High performance elastic polymer-modified tile adhesive - Type C2 TE S1

### KP 550 GEL ultra S1

High performance GEL-type deformable cementitious adhesive - Type C2 TE S1

## 7 TILE GROUTING

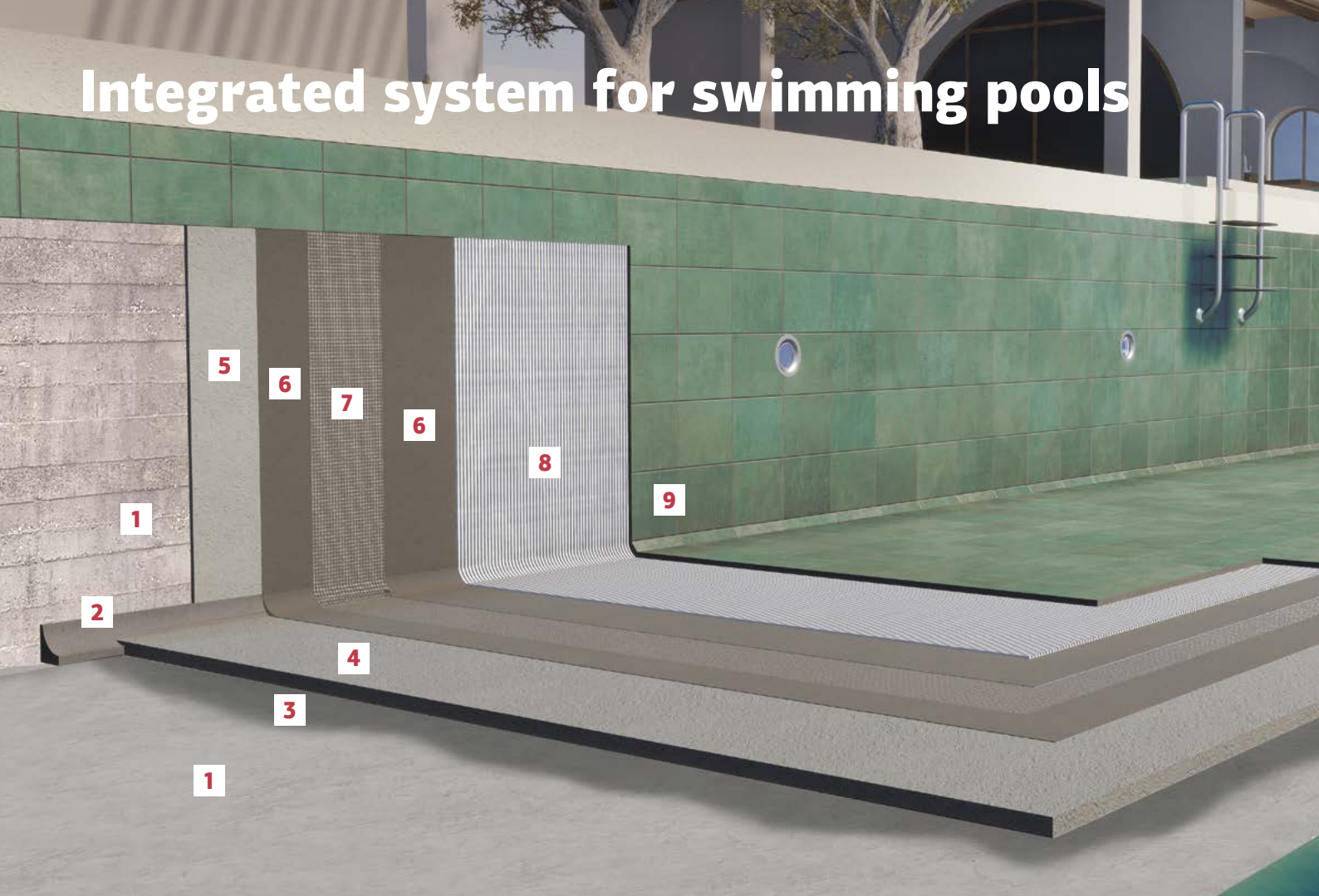
### colour grout 0-4

Acrylic water repellent tile grout - Type CG2

### epoxy grout 2-12

2-component epoxy grout - Type RG

# Integrated system for swimming pools



## 1 SUBSTRATE

## 2 SHAPING OF COVES AT WALL-FLOOR JOINTS

### RP 4000

Fiber-reinforced high strength repairing mortar (for layers up to 6 cm thick)  
Class R4

### RP 4200

Fiber-reinforced cementitious mortar for non-structural repairs of concrete & masonry (for layers up to 5 cm thick)  
Class R2

## 3 SURFACE PREPARATION

### SBR power-latex

High performance polymer admixture for cement-mortars

## 4 FLOOR LEVELLING

### FS 600 fast-screed

Fast-curing low-shrinkage cement mortar for the construction and levelling of floors (for 2-6 cm thick layers)

## 5 WALL LEVELLING WITH POOL PLASTER

## 6 WATERPROOFING

### hydroseal 7000 fibro-flex

Flexible fiber-reinforced 2-component cementitious waterproofing mortar - Class A4

### hydroseal 8000 super-elastic

Flexible 2-component brushable sealing slurry - Class A5

## 7 WATERPROOFING REINFORCEMENT

### fiberglass mesh for reinforcing waterproofing layers

Flexible alkali-resistant fiberglass mesh. Weight 60 g/m<sup>2</sup>.

## 8 MOSAIC / TILE INSTALLATION

### KP 300 flexy

Elastic polymer-modified tile adhesive - Type C2 TE S1

### KP 500 elastic

High performance elastic polymer-modified tile adhesive - Type C2 TE S1

### KP 550 GEL ultra S1

High performance GEL-type deformable cementitious adhesive - Type C2 TE S1

### KP 600 ultra flex

Highly elastic polymer-modified tile adhesive Type C2 TE S2

## 9 MOSAIC / TILE GROUTING

### epoxy grout 2-12

2-component epoxy grout - Type RG



## hydroflex hybrid-pu

### hybrid-polyurethane elastomeric waterproofing roof-coating

**DESCRIPTION:** High quality, hybrid elastomeric coating, composed out of special polyurethane and acrylic polymers. Fast curing, forming a totally watertight, highly elastic and durable membrane without seams or joints. The waterproofing membrane is resistant to UV radiation, with high solar-reflectance properties and highly resistant to stagnant water. It exhibits excellent weathering resistance (up to 10 years) when reinforced with the special polyester fleece. Classified as coating (C) for the protection of concrete structures according to European standard EN 1504-2.

**APPLICATIONS:** Ideal for the waterproofing of terraces, balconies and roofs, over old waterproofing membranes (bitumen sheets, polyurethane, acrylic), as well as difficult areas like corners, edges and joints between adjacent different materials.

Also suitable for local sealing of cracks on flat roofs and waterproofing under tiles in wet areas. It exhibits high solar reflectance which makes it capable to be applied as cool roof-coating.

PACKAGING	ITEMS/PAL.
5 kg plastic container	96
15 kg plastic container	44

**CONSUMPTION:** Approximately 0.5-1.0 kg/m<sup>2</sup> per layer, depending on the application method and the roughness of the substrate.



## hydroflex-acryl

### acrylic brushable elastomeric roof-coating

**DESCRIPTION:** Brushable elastomeric roof-coating, based on acrylic polymers. After it is applied, it forms an elastic membrane without joints, highly resistant to UV radiation and with high solar-reflectance properties. Contains no organic solvents. Classified as coating (C) for the protection of concrete structures according to European standard EN 1504-2.

**APPLICATIONS:** Used for waterproofing roofs, as well as difficult points such as corners, edges, joints between different materials or for sealing cracks in roofs.

Also suitable as cool roof-coating due to its high solar reflectance.

PACKAGING	ITEMS/PAL.
5 kg plastic container	96
13 kg plastic container	44

**CONSUMPTION:** Approximately 1.0-1.5 kg/m<sup>2</sup> in two layers, depending on the substrate's type.



## solvent-255

### solvent for polyurethane waterproofing membranes

**DESCRIPTION:** Powerful solvent for polyurethane waterproofing membranes applied with roller, brush or spray.

**APPLICATIONS:** It is used for the dilution of polyurethane waterproofing membranes, as well as to clean tools after use and the residues of polyurethane materials.

PACKAGING	ITEMS/PAL.
4 kg metal container	115
16 kg metal container	33

**CONSUMPTION:** 5% dilution of polyurethane waterproofing membranes.



## 2.2 auxiliary materials



### fiberglass mesh for reinforcing waterproofing layers

Flexible alkali-resistant fiberglass mesh, for the reinforcement of flexible cementitious waterproofing layers, as well as elastomeric acrylic-, polyurethane- or asphalt-based coatings.

WEIGHT	SQUARE OPENING	CLOUR	DIMENSIONS
60 g/m <sup>2</sup>	2x2 mm	White	1x50 m (50m <sup>2</sup> )

# Integrated systems for roof waterproofing



## with flexible cementitious waterproofing mortar

- 1 SUBSTRATE**
- 2 SURFACE PREPARATION**  
**acrylic primer**  
Water-based acrylic deep-penetrating primer
- 3 WATERPROOFING**  
**hydroflex cool•roof**  
Flexible UV-resistant  
2-component cementitious  
waterproofing mortar  
Class A5
- 4 WATERPROOFING REINFORCEMENT**  
**fiberglass mesh for reinforcing waterproofing layers**  
Flexible alkali-resistant fiberglass mesh.  
Weight 60 g/m<sup>2</sup>.

## with brushable hybrid-polyurethane waterproofing coating

- 1 SUBSTRATE**
- 2 SURFACE PREPARATION**  
**acrylic primer**  
Water-based acrylic deep-penetrating primer  
**hydro•primer**  
Primer for the acrylic brushable elastomeric  
waterproofing roof-coating
- 3 WATERPROOFING**  
**hydroflex hybrid•pu**  
Hybrid-polyurethane elastomeric  
waterproofing roof-coating
- 4 WATERPROOFING REINFORCEMENT**  
**polyester fabric for reinforcing waterproofing layers**  
Strong polyester fabric. Weight 50 g/m<sup>2</sup>.



## polyester fabric for reinforcing waterproofing layers

High-strength polyester fabric for the reinforcement of waterproofing layers made of hybrid, polyurethane or acrylic waterproofing membranes.

WEIGHT	THICKNESS	COLOUR	DIMENSIONS
50 g/m <sup>2</sup>	0.6 mm	White	1x50 m (50 m <sup>2</sup> )



## polyester non-woven fabric

Polyester non-woven fabric with excellent mechanical and hydraulic properties. Used as a filter, reinforcement or separation layer in applications such as road construction, drainage works, foundations, railway projects, erosion protection works, retaining walls, dams, channels, etc.

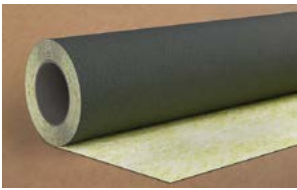
WEIGHT	DIMENSIONS
150 g/m <sup>2</sup>	2x100 m (200 m <sup>2</sup> )



## waterproofing & anti-fracture membrane

Flexible waterproofing membrane with high mechanical strength, suitable for waterproofing moisture-exposed areas prior to the application of the final covering. It also functions as an anti-fracture membrane, capable of bridging cracks.

WEIGHT	COLOUR	DIMENSIONS
275 g/m <sup>2</sup>	Blue	1x30 m (30 m <sup>2</sup> )



## waterproofing, decoupling & anti-fracture membrane

Flexible, high-strength membrane for the protection of floors installed over unstable or cracked substrates and for waterproofing moisture-exposed areas prior to the application of the final covering. It allows stress absorption and prevents crack transmission to the surface.

WEIGHT	COLOUR	DIMENSIONS
375 g/m <sup>2</sup>	Top: yellow Bottom: black	1x30 m (30 m <sup>2</sup> )



## waterproofing tape

Special waterproofing tape for sealing joints and corners. Suitable for applications using the waterproofing & anti-fracture membrane, and the decoupling membrane.

COLOUR	DIMENSIONS
Blue	50 m x 12 cm



## waterproofing corners

Preformed internal and external waterproofing corners. Suitable for applications using the waterproofing & anti-fracture membrane, and the decoupling membrane.

COLOUR	ITEMS/PACKAGING
Blue	25



## dimpled membrane (HDPE)

Dimpled membrane of high-density polyethylene (HDPE) for the protection of basement walls. Complies with the requirements of the European standard EN 13967.

WEIGHT	DIMPLE HEIGHT	DIMENSIONS
400 g/m <sup>2</sup>	8 mm	2x20 m (40 m <sup>2</sup> )



## pu·fix - elastomeric thixotropic polyurethane sealant

One-component, elastomeric polyurethane sealant with high thixotropy, suitable for sealing and bonding vertical and horizontal joints between similar or dissimilar materials. Ideal for building and civil engineering works, marine and industrial applications, for both interior and exterior use.

PACKAGING	COLOUR	ITEMS/BOX
600 ml roll	White / Grey	15

# 3

## ■ tile adhesives & grouts

- tile adhesives
- special application adhesives
- tile grouts & cleaners
- auxiliary materials



# europaean standards guide

EUROPEAN STANDARD EN 12004-1 TILE ADHESIVES				
ADHESIVE TYPE	SYMBOL GUIDE	PROPERTY	CHECK METHOD	MINIMUM REQUIREMENTS
C1	CEMENTITIOUS TILE ADHESIVE	adhesion strength	EN 12004-2, 8.3 after 28 days under normal conditions (23°C, 50±5% RH, U <sub>air</sub> ≤0.2m/s)	≥ 0,5 N/mm <sup>2</sup>
			EN 12004-2, 8.3 after thermal ageing at 70°C for 14 days	≥ 0,5 N/mm <sup>2</sup>
			EN 12004-2, 8.3 after water immersion for 21 days	≥ 0,5 N/mm <sup>2</sup>
			EN 12004-2, 8.3 after 25 freeze-thaw cycles	≥ 0,5 N/mm <sup>2</sup>
		open time	EN 12004-2, 8.1	≥ 20 min
C2	ENHANCED CEMENTITIOUS TILE ADHESIVE	adhesion strength	EN 12004-2, 8.3 after 28 days under normal conditions (23°C, 50±5% RH, U <sub>air</sub> ≤0.2m/s)	≥ 1,0 N/mm <sup>2</sup>
			EN 12004-2, 8.3 after thermal ageing at 70°C for 14 days	≥ 1,0 N/mm <sup>2</sup>
			EN 12004-2, 8.3 after water immersion for 21 days	≥ 1,0 N/mm <sup>2</sup>
			EN 12004-2, 8.3 after 25 freeze-thaw cycles	≥ 1,0 N/mm <sup>2</sup>
		open time	EN 12004-2, 8.1	≥ 20 min
D1	DISPERSION ADHESIVE BASED ON LIQUID POLYMERS	adhesion strength	EN 12004-2, 8.3 after 28 days under normal conditions (23°C, 50±5% RH, U <sub>air</sub> ≤0.2m/s)	≥ 1,0 N/mm <sup>2</sup>
		shear strength	EN 12004-2, 8.4 after thermal ageing at 70°C for 14 days	≥ 1,0 N/mm <sup>2</sup>
			EN 12004-2, 8.4 after water immersion for 14 days	-
				open time
D2	ENHANCED DISPERSION ADHESIVE BASED ON LIQUID POLYMERS	adhesion strength	EN 12004-2, 8.3 after 28 days under normal conditions (23°C, 50±5% RH, U <sub>air</sub> ≤0.2m/s)	≥ 1,0 N/mm <sup>2</sup>
		shear strength	EN 12004-2, 8.4 after thermal ageing at 70°C for 14 days	≥ 1,0 N/mm <sup>2</sup>
			EN 12004-2, 8.4 after water immersion for 14 days	≥ 0,5 N/mm <sup>2</sup>
				open time
R1	REACTIVE RESINS ADHESIVE	adhesion strength	EN 12004-2, 8.3 after 28 days under normal conditions (23°C, 50±5% RH, U <sub>air</sub> ≤0.2m/s)	≥ 2,0 N/mm <sup>2</sup>
		shear strength	EN 12004, 8.5 after water immersion for 14 days	≥ 2,0 N/mm <sup>2</sup>
			EN 12004, 8.5 after thermal shock	-
		open time	EN 12004-2, 8.1	≥ 20 min
R2	ENHANCED REACTIVE RESINS ADHESIVE	adhesion strength	EN 12004-2, 8.3 after 28 days under normal conditions (23°C, 50±5% RH, U <sub>air</sub> ≤0.2m/s)	≥ 2,0 N/mm <sup>2</sup>
		shear strength	EN 12004, 8.5 after water immersion for 14 days	≥ 2,0 N/mm <sup>2</sup>
			EN 12004, 8.5 after thermal shock	≥ 2,0 N/mm <sup>2</sup>
		open time	EN 12004-2, 8.1	≥ 20 min

ADDITIONAL CHARACTERISTICS				
ADHESIVE TYPE	SYMBOL GUIDE	PROPERTY	CHECK METHOD	MINIMUM REQUIREMENTS
T	THIXOTROPIC ADHESIVE (ZERO VERTICAL SLIP)	vertical slip	EN 12004-2, 8.2	≤ 0.5 mm
E	ADHESIVE WITH PROLONGED OPEN TIME	open time	EN 12004-2, 8.1	≥ 30 min
F	FAST-SETTING ADHESIVE	open time	EN 12004-2, 8.1	≥ 10 min
		adhesion strength after 24 hours	EN 12004-2, 8.3	≥ 0.5 N/mm <sup>2</sup>

EUROPEAN STANDARD EN 12002 ELASTIC TILE ADHESIVES				
ADHESIVE TYPE	SYMBOL GUIDE	PROPERTY	CHECK METHOD	MINIMUM REQUIREMENTS
S1	ELASTIC ADHESIVE	lateral deformability S	EN 12004-2, 8.6	2.5 mm ≤ S < 5 mm
S2	HIGHLY ELASTIC ADHESIVE			S ≥ 5 mm

## **FINOMIX® adhesive tiles** comformity with european standards

ADHESIVE NAME	CLASS	DESCRIPTION
KP 80	C1	Cementitious tile adhesive for absorbent tiles and common substrates. <i>for interior and exterior use</i>
KP 100	C1 T	Cementitious tile adhesive with zero vertical slip, for absorbent tiles and common substrates. <i>for interior and exterior use</i>
KP 200	C2 T	Enhanced cementitious tile adhesive with zero vertical slip, for non-absorbent tiles and common substrates. <i>for interior and exterior use</i>
KP 220	C2 E	Enhanced cementitious tile adhesive with extended open time of adhesion, for non-absorbent tiles and common substrates. <i>for interior and exterior use</i>
KP 250	C2 TE	Enhanced cementitious tile adhesive with zero vertical slip and extended open time of adhesion, for non-absorbent tiles and common substrates. <i>for interior and exterior use</i>
KP 300	C2 TE S1	Enhanced cementitious tile adhesive with zero vertical slip and extended open time of adhesion, for non-absorbent tiles. <i>elastic - for interior and exterior use</i>
KP 400	C2 TE	Enhanced cementitious tile adhesive with zero vertical slip and extended open time of adhesion, for non-absorbent tiles and common substrates. <i>for interior and exterior use</i>
KP 450	C2 FT	Fast-setting, enhanced cementitious tile adhesive with zero vertical slip, for non-absorbent tiles and common substrates. <i>for interior and exterior use</i>
KP 500	C2 TE S1	Enhanced cementitious tile adhesive with zero vertical slip and extended open time of adhesion, for non-absorbent tiles. <i>elastic - for interior and exterior use</i>
KP 550 GEL	C2 TE S1	Enhanced cementitious tile adhesive with zero vertical slip and extended open time of adhesion, for non-absorbent tiles. <i>elastic - for interior and exterior use</i>
KP 600	C2 TE S2	Enhanced cementitious tile adhesive with zero vertical slip and extended open time of adhesion, for non-absorbent tiles. <i>highly elastic - for interior and exterior use</i>

# table of applications for FINOMIX® tile

ADHESIVE NAME	KP 80	KP 100	KP 200	KP 230	KP 250
ADHESIVE TYPE	C1	C1 T	C2 T	C2 TE	C2 TE
<b>BUILDING MATERIAL</b>					
ceramic tiles (absorbent)					
granite tiles					
medium dimensions tiles (up to 3600 cm²)			▲		
large dimensions tiles (up to 1.20x1.20 m)					
very large dimensions tiles (indicatively: 3.00x1.60 m)					
marble					
natural stone					
artificial stone					
ceramic mosaics					
glass mosaics				▲	▲
AAC blocks					
glass blocks					
fire bricks					
<b>INTERIOR FLOOR</b>					
cement screeds					
lightweight concrete	●	●	●	●	●
mosaic			● ▲	●	●
old tile layings				● ▲	● ▲
underfloor heating					▲
wood					
metal					
<b>INTERIOR WALL</b>					
cement-based plasters					
gypsum plasters		●	●	●	●
cement board			● ▲	● ▲	● ▲
gypsum board			● ▲	● ▲	● ▲
AAC blocks		●	●	●	●
<b>BATHROOM</b>					
cement screeds					
plaster					
gypsum board			● ▲	● ▲	● ▲
<b>BALCONY - TERRACE</b>					
cementitious surface			▲		
lightweight concrete			● ▲	● ▲	● ▲
<b>FACADES</b>					
plaster			▲		
cement board				● ▲	● ▲
AAC blocks			● ▲	●	●
<b>SWIMMING POOL</b>					
cementitious surface					

Recommended application



Alternative application







## 3.1 tile adhesives



### KP 80 standard

polymer-modified tile adhesive

■ Type C1 ■

**DESCRIPTION:** Cement-based, polymer-modified tile adhesive.

It exhibits high adhesion strength and resistance to moisture.

Classified as C1 type cementitious adhesive according to European standard EN 12004-1.

**APPLICATIONS:** Suitable for the installation of ceramic tiles, but also for minor repair works from painters and electricians.

It is applied on floors, on common substrates such as concrete, floor screeds, etc.

Suitable for both interior and exterior applications.

PACKAGING	ITEMS/PAL.
25 kg paper bag	60

**CONSUMPTION:** Approximately 2-5 kg/m<sup>2</sup> depending on the substrate's roughness and the dimensions of the tiles.



### KP 100 acrylic

acrylic tile adhesive

■ Type C1 T ■

**DESCRIPTION:** Cement-based, polymer-modified tile adhesive.

It exhibits high adhesion strength, no vertical slip and resistance to moisture.

Classified as C1 T type cementitious adhesive according to European standard EN 12004-1.

**APPLICATIONS:** Suitable for the installation of ceramic tiles, but also for minor repair works from painters and electricians.

It is applied on walls and floors, on common substrates such as concrete, floor screeds, masonry, renders, etc.

Suitable for both interior and exterior applications.

PACKAGING	ITEMS/BOX	ITEMS/PAL.
5 kg plastic bag	4	144
25 kg paper bag		60

**CONSUMPTION:** Approximately 2-5 kg/m<sup>2</sup> depending on the substrate's roughness and the dimensions of the tiles.



### KP 200 super acrylic

high performance acrylic tile adhesive

■ Type C2 T ■

**DESCRIPTION:** High performance, polymer-modified, cement-based tile adhesive.

It exhibits high adhesion strength, no vertical slip and resistance to moisture.

Classified as C2 T type cementitious adhesive according to European standard EN 12004-1.

**APPLICATIONS:** Suitable for the installation of absorbent (ceramic) tiles of any type and size, natural stones, as well as non-absorbent tiles (gres porcelanato, cotto, etc.) of small and medium sizes.

It is applied on walls and floors, on common substrates like concrete, floor screeds, masonry, renders, etc.

Suitable for both interior and exterior applications.

PACKAGING	ITEMS/PAL.
25 kg paper bag	60

**CONSUMPTION:** Approximately 2-5 kg/m<sup>2</sup> depending on the substrate's roughness and the dimensions of the tiles.



## KP 230 extra fiber

high performance polymer-modified tile adhesive reinforced with microfibers  
 ■ Type C2 TE ■

**DESCRIPTION:** Cement-based tile adhesive, modified with enhancing polymers and microfibers, for the installation of ceramic and porcelain tiles. It exhibits increased initial and final adhesion strength, zero vertical slip, extended open time and increased resistance to moisture. The special microfibers offer excellent workability characteristics, while they tri-dimensionally reinforce its structure reducing shrinkage and increasing adhesion strength. Classified as type C2 TE cementitious adhesive according to European standard EN 12004-1.

**APPLICATIONS:** Suitable for the installation of ceramic, terrazzo, cotto and porcelain tiles of most common sizes (max. 3600 cm<sup>2</sup>), as well as natural and artificial stones. It is applied on wall and floor surfaces, on usual substrates like concrete, cementitious screeds or plaster, brickwork, aerated concrete elements, but also on cement, gypsum or fiber boards\*. Also suitable for installing tiles on existing floors (tiles, terrazzo, etc.) provided that the surface is treated with suitable primer. Suitable for both interior and exterior applications.

PACKAGING	ITEMS/PAL.
25 kg paper bag	60

**CONSUMPTION:** Approximately 2-5 kg/m<sup>2</sup> depending on the substrate's roughness and the dimensions of the tiles.



## KP 250 special

high performance polymer-modified tile adhesive  
 ■ Type C2 TE ■

**DESCRIPTION:** High performance, cement-based tile adhesive, modified with enhancing polymers, for the installation of ceramic and porcelain tiles. It exhibits increased initial and final adhesion strength, zero vertical slip, extended open time and increased resistance to moisture and temperature changes. Classified as type C2 TE cementitious adhesive according to European standard EN 12004-1.

**APPLICATIONS:** Suitable for the installation of absorbent (ceramic) and non-absorbent tiles (granite tiles, gres porcelanato) of medium size, as well as for the installation of decorative natural or artificial stones. It is applied on wall and floor surfaces, on usual substrates such as concrete, floor screeds, masonry and renders, but also on cement, gypsum or fiber boards\*. Also suitable for installing tiles on existing floors (tiles, terrazzo, etc.) provided that the surface is treated with suitable primer. Suitable for both interior and exterior applications.

PACKAGING	ITEMS/PAL.
25 kg paper bag	60

**CONSUMPTION:** Approximately 2-5 kg/m<sup>2</sup> depending on the substrate's roughness and the dimensions of the tiles.



## KP 300 flexy

elastic polymer-modified tile adhesive  
 ■ Type C2 TE S1 ■

**DESCRIPTION:** High performance, deformable, polymer-modified, cement-based tile adhesive. It exhibits high initial and final adhesion strength, and increased resistance to moisture, frost and temperature changes.

It provides remarkable workability, no vertical slip and extended open time.

Classified as C2 TE S1 type cementitious adhesive according to the European standard EN 12004-1.

**APPLICATIONS:** Suitable for the installation of large-format tiles up to 1.20x1.20 m, granites, decorative tiles, mosaic tiles, and any other type of absorbent and non-absorbent tiles.

It is applied on walls and floors, on concrete, floor screeds, masonry and render, gypsum, cement or fiber boards\*, but also on substrates with high demands for adhesion, elasticity and moisture resistance (e.g. swimming pools, underfloor heating installations, terraces, balconies, old tile layers, etc.). Suitable for both interior and exterior applications.

PACKAGING	ITEMS/BOX	ITEMS/PAL.
5 kg plastic bag	4	144
25 kg paper bag		60

**CONSUMPTION:** Approximately 2-5 kg/m<sup>2</sup> depending on the substrate's roughness and the dimensions of the tiles.

\* It is recommended, dry wall surfaces (gypsum boards, cement boards, fiber boards, etc.) to be treated with FINO•CONTACT primer before tile installation.



## KP 400 marble & granite

high performance acrylic adhesive for marble & granite

■ Type C2 TE ■

**DESCRIPTION:** High performance, polymer-modified, cement-based tile adhesive.

It exhibits increased adhesion strength, extended open time and strong thixotropic consistency preventing vertical slip even with heavy tiles. Can be applied in thick layers up to 15 mm.

Protects sensitive marbles from staining.

Classified as C2 TE type cementitious adhesive according to European standard EN 12004-1.

**APPLICATIONS:** Ideal for the installation of sensitive white and highly absorbent marbles and natural granites. Also suitable for the installation of absorbent and non-absorbent tiles.

It is applied on walls and floors, on common substrates (e.g. concrete, floor screeds, masonry, renders, etc.), but also on gypsum, cement or fiber boards\*.

It can be applied on surfaces subject to small contractions-expansions or heavy traffic (bathrooms, shopping centers, hotels, etc.).

PACKAGING	ITEMS/PAL.
25 kg paper bag	60

**CONSUMPTION:** Approximately 2-5 kg/m<sup>2</sup> depending on the substrate's roughness and the dimensions of the tiles.



## KP 450 rapid

fast-setting polymer-modified tile adhesive

■ Type C2 FT ■

**DESCRIPTION:** Fast-setting, polymer-modified, cement-based tile adhesive.

It exhibits increased initial and final adhesion strength, no vertical slip and resistance to moisture and temperature changes.

Tiled surfaces can be walked and grouted after 3-4 hours depending on ambient conditions.

Classified as C2 FT type cementitious adhesive according to European standard EN 12004-1.

**APPLICATIONS:** For the installation of absorbent (ceramic) and non-absorbent tiles (gres porcelanato), as well as decorative natural or artificial stones. It is applied on walls and floors, on common substrates (e.g. concrete, floor screeds, masonry, renders, etc.), but also on gypsum, cement or fiber boards\*.

Also suitable for installing tiles over existing floors (old tile layers, terrazzo, etc.) provided that the surface is treated with a suitable primer.

It is ideal for cases where the surfaces must be used in a short time (store refurbishing, etc.).

Suitable for both interior and exterior applications.

PACKAGING	ITEMS/PAL.
20 kg paper bag WHITE/GREY	72

**CONSUMPTION:** Approximately 2-5 kg/m<sup>2</sup> depending on the substrate's roughness and the dimensions of the tiles.



## KP 500 elastic

high performance elastic polymer-modified tile adhesive

■ Type C2 TE S1 ■

**DESCRIPTION:** High performance, elastic, polymer-modified, cement-based tile adhesive.

It exhibits strong adhesion strength and exceptional resistance to moisture, frost and temperature changes. It provides excellent workability, no vertical slip and extended open time.

Classified as C2 TE S1 type cementitious adhesive according to European standard EN 12004-1.

**APPLICATIONS:** Suitable for the installation of large-format tiles up to 1.20x1.20 m, glass mosaic tiles, terrazzo and any other type of absorbent and non-absorbent tiles.

It is applied on walls and floors, on concrete, floor screeds, masonry and render, gypsum, cement or fiber boards\*, over existing floors (old tile layers, terrazzo, etc.) but also in moist areas and on substrates subject to contraction-expansions, heavy traffic and thus with high demands for adhesion, flexibility and moisture resistance (e.g. swimming pools, under floor heating installations, terraces, balconies, shopping centers, hotels, etc.).

PACKAGING	ITEMS/PAL.
25 kg paper bag	60

**CONSUMPTION:** Approximately 2-5 kg/m<sup>2</sup> depending on the substrate's roughness and the dimensions of the tiles.



## KP 550 GEL ultra S1

high performance GEL-type deformable cementitious adhesive

■ Type C2 TE S1 ■

**DESCRIPTION:** Deformable cementitious tile adhesive with GEL technology, for the installation of any type and dimension ceramic tiles and natural stones.

GEL technology provides KP 550 GEL with excellent workability and performance characteristics. It exhibits strong thixotropy in combination with very smooth texture, almost liquid, which withstands the weight of the tiles, allows total wetting of the backside of the tile, while it significantly reduces the effort of the installer during spreading of the adhesive.

Classified as C2 TE S1 type cementitious adhesive according to European standard EN 12004-1.

**APPLICATIONS:** Suitable for the installation of any type of ceramic and porcelain tiles, thin and large-format tiles, glass-mosaic tiles, terrazzo slabs, marbles, natural stones and granite, on indoor and outdoor surfaces.

It can be applied on any substrate like concrete, cement floor-screeds, existing floors covered with terrazzo, marble or tiles, renders, cement, gypsum or fiber boards\*, etc.

It is ideal for swimming pools, rooftops, terraces, balconies, moist areas (showers, baths, etc.) underfloor heating installations, high-traffic areas (shopping centers, hotels, etc.) and any other application with increased demands in flexibility, adhesion strength and resistance to moisture.

PACKAGING	ITEMS/PAL.
23 kg paper bag	60

**CONSUMPTION:** Approximately 2-5 kg/m<sup>2</sup> depending on the substrate's roughness and the dimensions of the tiles.



## KP 600 ultra flex

highly elastic polymer-modified tile adhesive

■ Type C2 TE S2 ■

**DESCRIPTION:** Highly-deformable, polymer-modified, cement-based tile adhesive, for highly demanding applications.

It exhibits exceptional all-around performance with very high adhesion strength, no vertical slip, extended open time and remarkable resistance to moisture, frost and temperature changes.

Classified as C2 TE S2 type cementitious adhesive according to European standard EN 12004-1.

**APPLICATIONS:** Suitable for the installation of large-format tiles (indicatively 3.0x1.6 m), sensitive natural or artificial tiles treated with epoxy-based reinforcing back-coat, but also any other type and size of absorbent and non-absorbent tiles, glass mosaics, etc.

It is applied on walls and floors, on concrete, floor screeds, masonry and render, gypsum, cement or fiber boards\*, over existing floors (old tile layers, terrazzo, etc.).

Also on substrates subject to strong contraction-expansions, with high demands for adhesion, flexibility and watertightness (e.g. metallic surfaces, swimming pools, underfloor heating installations, terraces, balconies, shopping centers, hotels, etc.).

Suitable for both interior and exterior applications.

PACKAGING	ITEMS/PAL.
25 kg paper bag	60

**CONSUMPTION:** Approximately 2-5 kg/m<sup>2</sup> depending on the substrate's roughness and the dimensions of the tiles.

\* It is recommended, dry wall surfaces (gypsum boards, cement boards, fiber boards, etc.) to be treated with FINO•CONTACT primer before tile installation.



## 3.2 special application adhesives



### poro 510

polymer-modified cementitious adhesive for aerated concrete blocks

■ Type M5 ■

**DESCRIPTION:** Cement-based, polymer-modified adhesive mortar, used for construction purposes of AAC blocks. It exhibits extended open time of application, high adhesion strength and resistance to moisture.

Due to its special grain-size distribution and viscosity it enables thin-bed application and thus prevents the formation of thermal bridges during the building of thermal insulating AAC blocks.

Classified as thin-bed masonry mortar type M5, A1 according to European standard EN 998-2.

**APPLICATIONS:** Ideal for the construction of any type and size of AAC blocks and any other structural element with similar characteristics (high porosity), as well as, for the filling of joints between blocks. Suitable for both interior and exterior applications.

PACKAGING	ITEMS/PAL.
25 kg paper bag	60

**CONSUMPTION:** Approximately 20-25 kg/m<sup>3</sup> of AAC blocks.



### GL 520 glass

polymer-modified adhesive for glass blocks

■ Type M20 ■

**DESCRIPTION:** Cement-based, polymer-modified mortar.

It exhibits strong adhesion to the surface of glass-blocks, thixotropy and increased resistance to moisture, temperature changes and abrasion.

Classified as M20, A1 type mortar according to European standard EN 998-2.

**APPLICATIONS:** For building and grouting glass blocks.

Suitable for both interior and exterior applications.

PACKAGING	ITEMS/BOX	ITEMS/PAL.
5 kg plastic bag	4	144

**CONSUMPTION:** Approximately 15 kg/m<sup>2</sup> for masonry with glass blocks of usual dimensions.



### KF 530 fire-proof

refractory mortar for fixing and grouting firebricks

■ Type M30 ■

**DESCRIPTION:** Cementitious mortar based on refractory cement and special additives, for installing and grouting firebricks.

It exhibits excellent resistance to high temperatures (1000°C), rapid strength development, strong bonding with the firebricks and the substrate, and excellent thixotropic workability.

Classified as M30, A1 mortar according to European standard EN 998-2.

**APPLICATIONS:** Ideal for installing and grouting firebricks in fireplaces, ovens, chimneys, barbeques, etc., as well as for repairing damaged joints of firebricks.

Suitable for both interior and exterior applications.

PACKAGING	ITEMS/BOX	ITEMS/PAL.
5 kg plastic bag	4	144
25 kg paper bag		60

**CONSUMPTION:** Indicatively: 5 kg/m<sup>2</sup> for firebricks with dimensions of 20x10x3 cm and 1 cm joint width.



## 3.3 tile grouts & cleaners



### colour grout 0-4

acrylic water repellent tile grout

▪ Type CG2 ▪

**DESCRIPTION:** Cement-based, polymer-modified grouting mortar for tile-joints. It exhibits excellent resistance to abrasion, moisture, mold growth and frost, as well as excellent colour stability.

Available in 24 colours (see colour chart on page 38).

Classified as CG2 type cementitious tile grout according to European standard EN 13888.

**APPLICATIONS:** Suitable for grouting joint-widths 0-4 mm on walls and floors, between all types of ceramic and non-absorbent tiles, marble, glass mosaic tiles, as well as in any case where aesthetics require a very smooth joint.

Suitable for both interior and exterior applications.

PACKAGING	ITEMS/BOX	ITEMS/PAL.
5 kg plastic bag	4	144

**CONSUMPTION:** Depending on the width of the joint and the dimensions of the tiles. Consult the table of indicative grout consumptions on page 37.



### epoxy grout 2-12

2-component epoxy grout

▪ Type RG ▪

**DESCRIPTION:** Bi-component, solvent-free epoxy grout. It exhibits exceptionally high mechanical strength and resistance to chemicals, while it is water and stain resistant, and antifungal.

Available in 5 colours: EP110 white, EP120 beige, EP130 light grey, EP140 grey and EP150 black.

Classified as RG type grouting material according to European standard EN 13888.

**APPLICATIONS:** Suitable for grouting joint widths of 2-12 mm on walls and floors, between tiles of any type, glass mosaics, marble, granite and other natural or artificial stones.

It is ideal for grouting tiles or glass mosaics in swimming pools, natural thermal spring baths, chemical industries, food and beverage industries, slaughterhouses, dairy industries, battery production and recharging facilities, wastewater treatment facilities, professional kitchens, chemical laboratories, hospitals, clinics, etc. Suitable for applications in direct contact with potable water.

PACKAGING
3 kg plastic container
5 kg plastic container
10 kg plastic container

**CONSUMPTION:** Depending on the width of the joint and the dimensions of the tiles. Consult the table of indicative grout consumptions on page 37.



### elastogROUT

polymeric liquid resin for acrylic tile grouts

**DESCRIPTION:** Aqueous dispersion of synthetic polymers used in replacement of the mixing water of the cement-based grouts COLOUR GROUT 0-4, for improving their properties.

It improves the all-around properties of the cement-based grouts and more specifically their mechanical strength, watertightness and resistance to mold growth and chemicals.

**APPLICATIONS:** The ELASTOGROUT system with the cement-based grouts COLOUR GROUT 0-4 is applied in cases of joints on balconies, terraces and swimming pools, in areas that are frequently steam cleaned, in areas with heavy traffic, for the repair of old joints, glass mosaics, etc.

PACKAGING	ITEMS/BOX	ITEMS/PAL.
1 kg plastic container	14	504
5 kg plastic container		112
20 kg plastic container		39

**CONSUMPTION:** Approximately 1.3-1.6 kg / 5 kg grout, depending on the type and colour of the grout.



## pro.clean P10

### acidic tile grout cleaner

**DESCRIPTION:** Powerful cleaner for tile grouts and cementitious residues in general. The special formula quickly dissolves and removes residues of tile grouts, tile adhesives, plasters and other cementitious materials.

**APPLICATIONS:** Used for cleaning cementitious residues from ceramic tiles and tools, biofouling from submerged parts of ships, salt and rust depositions from cooling circuits, heat exchangers, closed circuits with water, etc. Thanks to the presence of corrosion inhibitors, it is applicable in every situation (except from aluminum alloys).

PACKAGING	ITEMS/BOX	ITEMS/PAL.
1 lt plastic container	14	504
5 lt plastic container		112

**CONSUMPTION:** Approximately 1 lt / 15-20 m<sup>2</sup>.



## pro.clean P20

### natural stone cleaner

**DESCRIPTION:** Mild acidic cleaner for natural stones, mosaics and unpolished marbles. The special formula cleans deeply stains of rust, soil, oil, coffee and cementitious residues, restoring the initial vibrancy in the colours of natural stones.

**APPLICATIONS:** Used for cleaning walls and floors clad with natural stones, marbles and mosaics, for restoring surfaces and removing stains that have been created over time.

PACKAGING	ITEMS/BOX	ITEMS/PAL.
1 lt plastic container	14	504
5 lt plastic container		112

**CONSUMPTION:** Approximately 1 lt / 4-5 m<sup>2</sup>.



## 3.4 auxiliary materials



### tile levelling spacers & wedges

Plastic spacers (clips) for installing 3-12 mm thick tiles, and high-density polyethylene (HDPE) wedges for installing 3-24 mm thick tiles and marbles.

They simplify the installation of large format tiles, avoiding the differences in height and keeping them aligned until the adhesive sets.

SPACERS CODE	THICKNESS (mm)	ITEMS/PACKAGING
ΑΠ1	1	100
ΑΠ2	2	
ΑΠ3	3	
WEDGES CODE	THICKNESS (mm)	ITEMS/PACKAGING
ΣΦ1	3-24	100



### cross-shaped tile spacers

Plastic cross-shaped spacers for creating joints when installing ceramic tiles.

CODE	THICKNESS (mm)	ITEMS/PACKAGING
Σ1	1	500
Σ2	2	
Σ3	3	
Σ4	4	
Σ5	5	



## T-shaped tile spacers

Plastic T-shaped spacers for creating joints when installing ceramic tiles.

CODE	THICKNESS (mm)	ITEMS/PACKAGING
T2	2	500
T3	3	
T5	5	



## tile wedges

Plastic wedges for installing ceramic tiles.

CODE	THICKNESS (mm)	ITEMS/PACKAGING
Φ1	3-5	1000

## indicative colour grout 0-4 consumption (kg/m<sup>2</sup>)

TILE DIMENSIONS (mm)	JOINT WIDTH (mm)			
	1	2	3	4
20 x 20 x 4	0.75	1.50	2.00	2.90
50 x 50 x 4	0.30	0.60	0.90	1.20
100 x 100 x 8	0.25	0.50	0.70	1.00
200 x 200 x 8	0.10	0.25	0.35	0.50
250 x 450 x 8	0.10	0.15	0.20	0.30
300 x 600 x 10	0.10	0.15	0.20	0.30
300 x 600 x 12	0.10	0.20	0.30	0.35
330 x 330 x 8	0.10	0.15	0.20	0.30
330 x 330 x 10	0.10	0.20	0.30	0.35
400 x 400 x 8	0.10	0.15	0.20	0.25
400 x 400 x 10	0.10	0.20	0.20	0.30
450 x 450 x 10	0.10	0.15	0.20	0.30
450 x 450 x 12	0.10	0.20	0.25	0.30
500 x 500 x 9	0.05	0.10	0.15	0.20
600 x 600 x 10	0.05	0.10	0.15	0.20
600 x 600 x 12	0.05	0.10	0.20	0.25
800 x 800 x 10	0.05	0.10	0.14	0.20
800 x 800 x 12	0.06	0.11	0.17	
600 x 1200 x 12	0.06	0.11	0.17	
1200 x 1200 x 12	0.06	0.07	0.11	

## indicative epoxy grout 2-12 consumption (kg/m<sup>2</sup>)

TILE DIMENSIONS (mm)	JOINT WIDTH (mm)			
	2	3	4	5
25 x 25 x 3	0.95	1.10		
30 x 30 x 3	0.95	1.10		
200 x 200 x 8	0.35	0.50	0.70	0.90
200 x 200 x 10	0.40	0.65	0.85	1.05
300 x 300 x 8	0.25	0.35	0.45	0.50
400 x 400 x 10	0.15	0.25	0.35	0.40
125 x 250 x 8	0.40	0.60	0.80	1.00
125 x 250 x 10	0.50	0.70	0.90	1.10

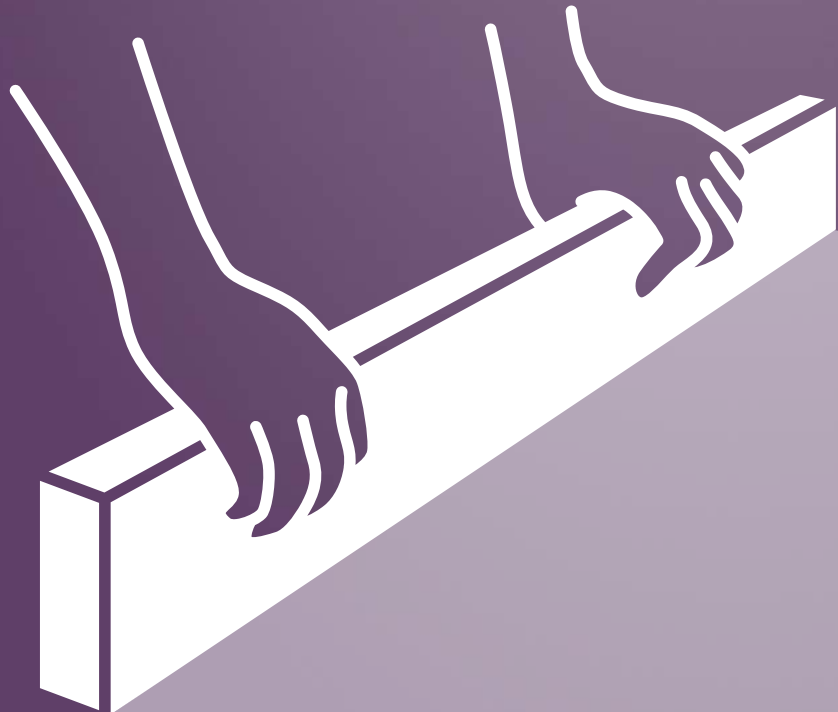
## COLOUR CHART FOR COLOUR GROUT 0-4

	WHITE	F 10
	PEARL GREY	F 20
	LONDON SKY	F 30
	GREY	F 40
	CEMENT GREY	F 50
	GRAPHITE	F 60
	BLACK	F 70
	VANILLA	F 80
	LEMON	F 90
	CORAL	F 100
	BEIGE	F 110
	CREAM	F 120
	CARAMEL	F 130
	LIGHT BROWN	F 140
	CERAMIC	F 150
	CHERRY BROWN	F 160
	DARK BROWN	F 170
	MOCCA	F 180
	COCOA	F 190
	BRIGHT SKY	F 200
	BLUE	F 210
	TURQUOISE	F 220
	LIGHT GREEN	F 230
	PISTACHIO	F 240

Colour representation in the chart is indicative only.

# 4. ■ floor screeds

- floor screeds
- auxiliary materials





## 4.1 floor screeds



### flow 1•10 rapid

**fast-setting self-levelling polymer-modified cementitious floor screed**  
(for 1-10 mm thick layers)

**DESCRIPTION:** Fast setting and drying, self-levelling mortar, based on cementitious binders, for durable floors from 1 to 10 mm thick.

It provides a totally level final surface with very high resistance to abrasion and mechanical strengths, as well as excellent bonding to the substrate. Available for light foot traffic after 2-3 hours. Classified as CT-C40-F10-AR1 type cementitious screed mortar according to European standard EN 13813.

**APPLICATIONS:** Ideal for levelling and smoothing floors that will be covered with tiles, carpet, wooden or plastic floor, epoxies, etc. Suitable for levelling over underfloor heating systems and for areas subject to heavy pedestrian (shopping centers, hotels, etc.) and vehicle traffic (warehouses, parkings, etc.). Also suitable as final layer in areas such as basements, lofts and warehouses. Applied in 1-10 mm thick layers. The surfaces to be covered with FLOW 1•10 RAPID should be treated first with the suitable primers PRIMER FP•31 and FINO•CONTACT. Suitable for indoor applications.

PACKAGING	ITEMS/PAL.
25 kg paper bag	60

**CONSUMPTION:** Approximately 1.5 kg/m<sup>2</sup> for a 1 mm thick layer.



### flow 3•30 eco•rapid

**fast-setting self-levelling polymer-modified cementitious floor screed**  
(for 3-30 mm thick layers)

**DESCRIPTION:** Fast setting and drying, self-levelling mortar, based on cementitious binders, for durable floors from 3 to 30 mm thick.

It provides a totally level final surface with very high resistance to abrasion and mechanical strengths, as well as excellent bonding to the substrate. Available for light foot traffic after 3 hours. Classified as CT-C30-F9-AR2 type cementitious screed mortar according to European standard EN 13813.

**APPLICATIONS:** Ideal for levelling and smoothing floors that will be covered with tiles, carpet, wooden or plastic floor, epoxies, etc. Suitable for levelling over underfloor heating systems and for areas subject to heavy pedestrian (shopping centers, hotels, etc.) and vehicle traffic (warehouses, parkings, etc.). Also suitable as final layer in areas such as basements, lofts and warehouses. Applied in 3-30 mm thick layers. The surfaces to be covered with FLOW 3•30 ECO•RAPID should be treated first with the suitable primers PRIMER FP•31 and FINO•CONTACT. Suitable for indoor applications.

PACKAGING	ITEMS/PAL.
25 kg paper bag	60

**CONSUMPTION:** Approximately 1.7 kg/m<sup>2</sup> for a 1 mm thick layer.



### flow 5•50 rapid

**fast-setting self-levelling polymer-modified cementitious floor screed**  
(for 5-50 mm thick layers)

**DESCRIPTION:** Fast setting and drying, self-levelling mortar, based on cementitious binders, for durable floors from 5 to 50 mm thick.

It provides a totally level final surface with very high resistance to abrasion and mechanical strengths, as well as excellent bonding to the substrate. Available for light foot traffic after 2-3 hours. Classified as CT-C40-F9-A9 type cementitious screed mortar according to European standard EN 13813.

**APPLICATIONS:** Ideal for levelling and smoothing floors that will be covered with tiles, carpet, wooden or plastic floor, epoxies, etc. Suitable for levelling over underfloor heating systems and for areas subject to heavy pedestrian (shopping centers, hotels, etc.) and vehicle traffic (warehouses, parkings, etc.). Also suitable as final layer in areas such as basements, lofts and warehouses. Applied in 5-50 mm thick layers. The surfaces to be covered with FLOW 5•50 RAPID should be treated first with the suitable primers PRIMER FP•31 and FINO•CONTACT. Suitable for indoor applications.

PACKAGING	ITEMS/PAL.
25 kg paper bag	60

**CONSUMPTION:** Approximately 1.7 kg/m<sup>2</sup> for a 1 mm thick layer.



## flow 3•10 décor

**coloured fast-setting self-levelling polymer-modified cementitious floor screed**  
(for 3-10 mm thick layers)

**DESCRIPTION:** Coloured, fast setting and drying, self-levelling mortar, based on cementitious binders, for decorative and durable floors from 3 to 10 mm thick. It provides a totally level final surface with very high resistance to abrasion and mechanical strengths, and excellent bonding to the substrate. Available for light foot traffic after 3-4 hours. Produced in white and 6 colours: beige, light grey, anthracite grey, red, yellow and dark brown. Classified as CT-C40-F9-AR2 type cementitious screed mortar according to European standard EN 13813.

**APPLICATIONS:** Ideal for levelling and decorating interiors such as offices, playrooms, exhibitions, shops, hotels, shopping malls, etc. Suitable for levelling over underfloor heating systems and for areas subject to heavy foot traffic (shopping centers, hotels, etc.). Applied in 3-10 mm thick layers. Suitable for indoor applications.

PACKAGING	ITEMS/PAL.
25 kg paper bag WHITE/COLOURED	60

**CONSUMPTION:** Approximately 1.5 kg/m<sup>2</sup> for a 1 mm thick layer.



## FS 100 screed

**fiber-reinforced cementitious levelling floor screed**  
(for layers up to 10 cm thick)

**DESCRIPTION:** Cement-based floor screed, for filling and levelling of floors. It exhibits excellent workability as it demands minimum effort during levelling, while it exhibits increased mechanical strength and 20% reduced weight compared to conventional floor screeds. Classified as CT-C7-F3-A15 type cementitious screed mortar according to European standard EN 13813.

**APPLICATIONS:** Suitable for filling and levelling of floors to be covered with tiles, marble or other natural stones, parquet, etc. Applied also for forming slopes on flat roofs prior to the application of waterproofing membranes. Applied in layers up to 10 cm thick. Suitable for both interior and exterior applications.

PACKAGING	ITEMS/PAL.
25 kg paper bag	60

**CONSUMPTION:** Approximately 13-14 kg/m<sup>2</sup> for a 1 cm thick layer.



## FS 600 fast•screed

**fast-curing low-shrinkage cement mortar for the construction and levelling of floors**  
(for 2-6 cm thick layers)

**DESCRIPTION:** Fast-curing, low-shrinkage, cement-based mortar, for the construction and levelling of floors prior to the final floor covering. It is characterized by rapid setting and hardening while it maintains prolonged workable time. It exhibits fast strength development and rapid hardening, as well as very good bonding to the substrate, and enhanced workability. It produces a level and durable final surface that can be covered after a short time. Classified as CT-C30-F7-A1<sub>f1</sub> type cementitious screed mortar according to European standard EN 13813.

**APPLICATIONS:** Suitable for forming bonded and unbonded floors in internal and external areas, prior to the installation of ceramic tiles, natural stones, microcement mortars, wood, PVC, linoleum, etc. The floors can be covered with ceramic tiles after 24 hours and with natural stones after 48 hours, while they are completely dry after 4 days. Applied in 2-6 cm thick layers. Suitable for both interior and exterior applications.

PACKAGING	ITEMS/PAL.
30 kg paper bag	48

**CONSUMPTION:** Approximately 18 kg/m<sup>2</sup> for a 1 cm thick layer, depending on compaction.



## HT 250 hard•top

industrial floor surface hardener

**DESCRIPTION:** Cement-based mortar used to improve the surface hardness and resistance to heavy loads of industrial floors.

Classified as CT-C70-F7-AR2 type cementitious screed mortar according to European standard EN 13813. Produced in grey and 6 more colours\*: white, beige, brick-red, yellow, light blue and green.

**APPLICATIONS:** It is used on still damp concrete floors to produce surfaces with significantly increased abrasion and heavy-load resistance, as well as reduced water permeability. Suitable for indoor and outdoor areas, parking lots, workshops, garages, warehouses, loading-unloading areas, etc.

In cases where further densification and hardening of the finished surface is required, apply the liquid concrete densifier SIL•HARD Li<sup>+</sup>.

For the optimal curing of the finished surface, especially during summer, apply the concrete curing products FINOCURE•W and FINOCURE•AC.

PACKAGING	ITEMS/PAL.
25 kg paper bag GREY/COLOURED	60

**CONSUMPTION:** Approximately 3-6 kg/m<sup>2</sup>.



## sil•hard Li<sup>+</sup>

liquid densifier and sealer for concrete and cementitious mortars

**DESCRIPTION:** Aqueous solution of active silicate salts with high penetrating ability.

The active substances of SIL•HARD Li<sup>+</sup> react chemically with the soft and porous calcium hydroxide that is formed during cement hydration and convert it to insoluble and chemically resistant crystals of calcium silicate hydrate, thus reducing the porosity and significantly increasing the durability of concrete and cementitious mortars.

In comparison to common concrete densifiers the active substances of SIL•HARD Li<sup>+</sup> additionally react with CO<sub>2</sub> to form a hydrophobic polymer within the pores and the surface.

This synergistic activity effectively seals the concrete and provides water resistance from the first day after application.

**APPLICATIONS:** It is applied for the densification and hardening of the surface of concrete, industrial floors (after the application of the industrial floor surface hardener HT 250 HARD•TOP), terrazzo floors and cementitious mortars.

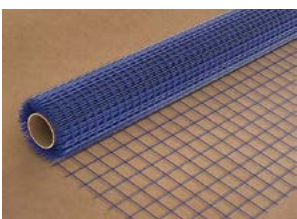
Additionally, for the renovation of concrete floors in order to strengthen their structure, to reduce dust generation and increase surface hardness and abrasion resistance.

PACKAGING	ITEMS/PAL.
5 kg plastic container	112
20kg plastic container	39

**CONSUMPTION:** 0.15-0.25 kg/m<sup>2</sup> depending on the surface's absorbency.



## 4.2 auxiliary materials



### fiberglass mesh for reinforcing floor screeds

Flexible, alkali-resistant fiberglass mesh for the reinforcement and strengthening of cementitious floor screeds (substrates, self-levelling compounds, etc.).

It improves cohesion and crack resistance. Easy to apply and transport, it replaces conventional steel reinforcement meshes.

WEIGHT	SQUARE OPENING	COLOUR	DIMENSIONS
145 g/m <sup>2</sup>	40x40 mm	Blue	1x50 m (50 m <sup>2</sup> )

# 5

## ■ Finoclima® external thermal insulation composite systems

- Finoclima® products
- auxiliary materials



Finoclima®



## FC 1100

### polymer-modified fiber-reinforced adhesive & reinforcing mortar for thermal insulation boards

**DESCRIPTION:** Fiber-reinforced, polymer-modified cementitious mortar, for the installation and the surface-reinforcement of thermal insulation boards on buildings' facades.

It exhibits high bonding strength on the thermal insulation boards, excellent adhesion to the substrate, elasticity and resistance to moisture and frost.

Classified as general purpose cementitious mortar type GP CSIV, W2 according to the European standard EN 998-1.

FC 1100 is part of the certified ETIC systems **Finoclima® MINERAL** (ETA 15/0720), **Finoclima® MW** (ETA 20/0174) and **Finoclima® EPS** (ETA 20/0175).

**APPLICATIONS:** Used in combination with the FC 1200 and FC 1300 renders for the external thermal insulation of the facades of the buildings, composing the **Finoclima®** certified external thermal insulation composite systems.

It is suitable for the installation and reinforcement of thermal insulation boards from expanded or extruded polystyrene, mineral wool, etc., on facades of buildings.

Additionally, reinforced with fiberglass mesh **clima•net** 160 g/m<sup>2</sup>, it is applied on the exterior surface of the installed thermal insulation boards creating the ideal base-coat for the subsequent render layer.

PACKAGING	ITEMS/PAL.
25 kg paper bag FINE WHITE	60
25 kg paper bag FINE GREY	60

#### CONSUMPTION:

- As an adhesive: approximately 4-5 kg/m<sup>2</sup>.
- As a base-coat: approximately 1.5 kg/m<sup>2</sup> for a 1 mm thick layer.



## FC 1100 thermo•fix

### polymer-modified fiber-reinforced adhesive & reinforcing mortar for thermal insulation boards

**DESCRIPTION:** Fiber-reinforced, polymer-modified cementitious mortar, for the installation and the surface-reinforcement of thermal insulation boards on buildings' facades.

It exhibits high bonding strength on the thermal insulating boards, excellent adhesion to the substrate, elasticity and resistance to moisture and frost.

Produced in two grain sizes, FINE (0.4 mm) and COARSE (1.2 mm), depending on the type of thermal insulation boards and the work requirements of each project.

Classified as general purpose cementitious mortar type GP CSIV, W2 according to the European standard EN 998-1.

**APPLICATIONS:** FC 1100 THERMO•FIX is used in combination with the FC 1200 and FC 1300 renders for the external thermal insulation of the facades of the buildings.

It is suitable for the installation and reinforcement of thermal insulation boards from expanded or extruded polystyrene, mineral wool, etc., on facades of buildings.

Additionally, reinforced with fiberglass mesh **clima•net** 160 g/m<sup>2</sup>, it is applied on the exterior surface of the installed thermal insulation boards creating the ideal base-coat for the subsequent finishing coat.

PACKAGING	ITEMS/PAL.
25 kg paper bag FINE WHITE	60
25 kg paper bag COARSE WHITE	60

#### CONSUMPTION:

- As an adhesive: approximately 4-6 kg/m<sup>2</sup>.
- As a base-coat: approximately 1.5 kg/m<sup>2</sup> for a 1 mm thick layer.



## FC 1100 organic

organic, fiber-reinforced, ready-to-use adhesive & reinforcement coating for thermal insulation boards

**DESCRIPTION:** Ready-to-use, acrylic, fiber-reinforced coating/adhesive for the external thermal insulation systems of the facades of buildings.

It exhibits high elasticity and bond strength of the thermal insulation boards, as well as strong adhesion on every substrate, and resistance to moisture.

Classified as external coating based on organic binders type V2-W2 according to the European standard EN 15824, and as dispersion adhesive type D1E according to the European standard EN 12004-1.

**APPLICATIONS:** It is used in combination with the finishing coatings FC 1200 and FC 1300 for the external thermal insulation of the buildings' facades.

It is ideal for the reinforcement of the surface of the thermal insulating boards in combination with the reinforcing fiberglass mesh **CLIMA•NET** 160 g/m<sup>2</sup>.

Additionally, it can be used for the bonding of thermal insulating boards on the external surfaces of buildings.

### CONSUMPTION:

- As a reinforcing coating: approximately 3-4 kg/m<sup>2</sup>.
- As an adhesive: approximately 4-5 kg/m<sup>2</sup>.

PACKAGING	ITEMS/PAL.
25 kg plastic container OFF-WHITE	24



## FC 1200

polymer-modified fiber-reinforced water resistant final-coat render

**DESCRIPTION:** Final-coat render, highly polymer-modified, fiber-reinforced, enhanced with special hydrophobic agents.

It exhibits exceptional performance against moisture, frost and severe weather conditions, increased mechanical strengths, flexibility and strong adhesion with the substrate.

Produced in two grain sizes, 1.0mm and 3.5 mm (graffiato), in white colour.

It can also be easily coloured with NATURAL COLOURS pigments in powder form.

Classified as general purpose mortar (GP) type CS II, W2 according to the European standard EN 998-1. FC 1200 is part of the ETIC system **Finoclima** MINERAL, certified with the European Technical Approval ETA-15/0720.

**APPLICATIONS:** Used as final-coat render for the finishing and smoothing of walls during rendering works.

It can be applied on common substrates over the base-coat render or in ETICS after the levelling mortar FC 1100.

FC 1200 is ideal for areas with high ambient moisture levels such as coastal and mountainous areas, due to its strong water repellency and water-vapour permeability.

Suitable for both interior and exterior applications.

PACKAGING	ITEMS/PAL.
25 kg paper bag WHITE/COLOURED	60

**CONSUMPTION:** Approximately 6-7 kg/m<sup>2</sup> for a 5 mm thick layer.



## FC 1300•acryl

ready-to-use acrylic render

**DESCRIPTION:** Ready-to-use render, based on acrylic resins, for the aesthetic finish of ETIC systems but also as decorative coating over common substrates. It exhibits high elasticity, excellent water-repellence, strong bonding strength to the substrate, while it allows water-vapour permeability of the building elements. Produced white or coloured in 260 UV-resistant colour shades according to the **Finoclima**<sup>®</sup> COLOUR PALETTE colour system, and in four different grain sizes (1.0-1.2-1.5-2.4 mm) depending on the desired aesthetic finish.

**APPLICATIONS:** Applied as the finishing decorative coating for the **Finoclima**<sup>®</sup> certified ETIC systems (ETA 15/0720, ETA 20/0174, ETA 20/0175). Also suitable to be applied on any common substrate, e.g. render, plaster, cement/plasterboard. Suitable for both interior and exterior applications.



PACKAGING	ITEMS/PAL.
5 kg plastic container WHITE/COLOURED	96
25 kg plastic container WHITE/COLOURED	24

**CONSUMPTION:** Depending on the grain size:  
 1.0 mm: 1.8-2.0 kg/m<sup>2</sup> - 1.2 mm: 1.9-2.2 kg/m<sup>2</sup>  
 1.5 mm: 2.0-2.5 kg/m<sup>2</sup> - 2.4 mm: 2.8-3.2 kg/m<sup>2</sup>



## FC 1300•silicone

ready-to-use silicone render

**DESCRIPTION:** Ready-to-use render, based on silicone and acrylic resins, modified with polysiloxane water-repelling additives, for the aesthetic finish of ETIC systems, but also as decorative coating over common substrates.

It exhibits high elasticity, strong bonding strength to the substrate, as well as maximum water repellent characteristics while it maintains high water-vapour permeability properties.

Produced white or coloured in 260 UV-resistant colour shades according to the **Finoclima**<sup>®</sup> COLOUR PALETTE colour system, and in four different grain sizes (1.0-1.2-1.5-2.4 mm) depending on the desired aesthetic finish.

**APPLICATIONS:** Applied as the finishing decorative coating for the **Finoclima**<sup>®</sup> certified ETIC systems (ETA 20/0174, ETA 20/0175). Also suitable to be applied on any common substrate, e.g. render, plaster, cement/plasterboard. Ideal for buildings located in areas with a particularly damp climate. Suitable for indoors and outdoors.



PACKAGING	ITEMS/PAL.
5 kg plastic container WHITE/COLOURED	96
25 kg plastic container WHITE/COLOURED	24

**CONSUMPTION:** Depending on the grain size:  
 1.0 mm: 1.8-2.0 kg/m<sup>2</sup> - 1.2 mm: 1.9-2.2 kg/m<sup>2</sup>  
 1.5 mm: 2.0-2.5 kg/m<sup>2</sup> - 2.4 mm: 2.8-3.2 kg/m<sup>2</sup>



## FC 1300 flex•roll silicone

ready-to-use flexible roller-applied silicone render

**DESCRIPTION:** Ready-to-use, flexible, water-resistant render, based on silicone and acrylic resins, for the aesthetic finish of ETIC systems, but also as decorative coating over common substrates.

It is water-resistant and exhibits high elasticity and excellent workability since it is applied with a roller like common paint. It adheres strongly on the surfaces and exhibits excellent water-vapour permeability characteristics due to its silicone-based composition.

Produced white or coloured in 260 UV-resistant colour shades according to the **Finoclima**<sup>®</sup> COLOUR PALETTE colour system.

**APPLICATIONS:** Applied as the finishing decorative coating for ETIC systems. Also suitable to be applied on any common substrate, e.g. cement/plaster boards, concrete, render, plaster, etc. It effectively renews the colour and the appearance of the buildings fast and easy. It is ideal for the aesthetic repair of old facades as it covers existing cracks and prevents the formation of new ones. Suitable for indoors and outdoors.



PACKAGING	ITEMS/PAL.
5 kg plastic container WHITE/COLOURED	96
25 kg plastic container WHITE/COLOURED	24

**CONSUMPTION:** Approximately 1.2-1.5 kg/m<sup>2</sup> applied in two layers.



## acrylic primer 1350

adhesion primer for acrylic renders

**DESCRIPTION:** Ready-to-use primer, based on acrylic resins, containing quartz aggregates, that promotes adhesion of the decorative renders (cement, acrylic or waterglass based) on the substrate. It exhibits excellent adhesion to the substrate. It is produced white but can be easily coloured.

**APPLICATIONS:** It is used to enhance adhesion of the decorative renders FC 1300•ACRYL of the **Finoclima**® certified ETIC systems (ETA 15/0720, ETA 20/0174, ETA 20/0175) on smooth and absorbent substrates, e.g. cement/gypsum boards, render/plaster, fair-faced concrete. Suitable for both interior and exterior applications.



PACKAGING	ITEMS/PAL.
5 kg plastic container	96
20 kg plastic container	24

**CONSUMPTION:** Approximately 0.25-0.30 kg/m<sup>2</sup> depending on the surface's absorbency and roughness.



## silicone primer 1450

adhesion primer for silicone renders

**DESCRIPTION:** Ready-to-use primer, based on silicone and acrylic resins, containing quartz aggregates, that promotes adhesion of the silicone-based decorative renders on the substrate. It exhibits excellent adhesion to the substrate. It is produced white but can be easily coloured.

**APPLICATIONS:** It is used to enhance adhesion of the decorative renders FC 1300•SILICONE and FC 1300 FLEX•ROLL SILICONE of the **Finoclima**® certified ETIC systems (ETA 20/0174, ETA 20/0175) on smooth and absorbent substrates, e.g. cement/gypsum boards, render/plaster, fair-faced concrete. Suitable for both interior and exterior applications.



PACKAGING	ITEMS/PAL.
5 kg plastic container	96
20 kg plastic container	24

**CONSUMPTION:** Approximately 0.25-0.30 kg/m<sup>2</sup> depending on the surface's absorbency and roughness.

# Finoclima® integrated external thermal insulation systems



- 1 substrate**  
Masonry/concrete
- 2 SP 20**  
Polymer-modified rough cast render
- 3 SB 30**  
Polymer-modified base-coat render
- 4 FC 1100**  
Polymer-modified fiber-reinforced adhesive & reinforcing mortar for thermal insulation boards  
WHITE / GREY  
**FC 1100 thermo-fix**  
Polymer-modified fiber-reinforced adhesive & reinforcing mortar for thermal insulation boards  
WHITE
- 5 clima•eps insulating boards**  
Certified expanded polystyrene boards, white (W) or graphite (G).  
**clima•mw insulating boards**  
Certified mineral wool boards.  
Fire classification A1.
- 6 clima•fix anchors**  
Suitable for concrete, masonry and stone.  
Available from 9 cm to 16 cm.  
Certified according to ETAG 014.
- 7 FC 1100**  
Polymer-modified fiber-reinforced adhesive & reinforcing mortar for thermal insulation boards  
WHITE / GREY  
**FC 1100 thermo-fix**  
Polymer-modified fiber-reinforced adhesive & reinforcing mortar for thermal insulation boards  
WHITE  
**FC 1100 organic**  
Organic, fiber-reinforced, ready-to-use adhesive & reinforcement coating for thermal insulation boards  
WHITE
- 8 clima•net fiberglass mesh**  
160 g/m<sup>2</sup>, alkali-resistant. Certified according to ETAG 004.
- 9 acrylic primer 1350**  
Adhesion primer for acrylic renders  
**silicone primer 1450**  
Adhesion primer for silicone renders
- 10 FC 1300•acryl**  
Ready-to-use acrylic render  
**FC 1300•silicone**  
Ready-to-use silicone render  
**FC 1200**  
Polymer-modified fiber-reinforced final-coat render
- 11 FC 1300 flex•roll silicone**  
Ready-to-use flexible roller-applied silicone render

## 5.2 auxiliary materials



### CLima•EPS W white EPS thermal insulation boards

Certified white expanded polystyrene boards for the **Finoclima**® ETIC systems. Produced according to EN 13163.

CODE	DENSITY (kg/m <sup>3</sup> )	THICKNESS (mm)	λ (W/m·K)
EPS 80	15-17	30-50-60-70-80	0.036
EPS 100	18-20	30-50-60-70-80	0.034



### CLima•EPS G graphite EPS thermal insulation boards

Certified graphite expanded polystyrene boards for the **Finoclima**® ETIC systems. Produced according to EN 13163.

CODE	DENSITY (kg/m <sup>3</sup> )	THICKNESS (mm)	λ (W/m·K)
EPS 80	≥ 16	30-50-60-70-80	0.031
EPS 100	≥ 19	30-50-60-70-80	0.031



### CLima•MW mineral wool thermal insulation boards

Certified mineral wool (MW) boards for the **Finoclima**® ETIC systems. Fire classification A1. Produced according to EN 13162.

THICKNESS (mm)	λ (W/m·K)
30-50-60-70-80	0.035



### CLima•XPS XPS thermal insulation boards

Certified extruded polystyrene boards for the **Finoclima**® ETIC systems. Produced according to EN 13164.

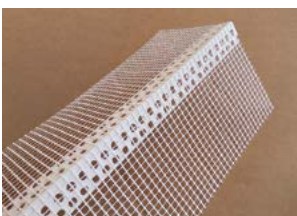
THICKNESS (mm)	λ (W/m·K)
30-50-60	0.033
70-80	0.034



### CLima•NET fiberglass mesh

Alkali-resistant fiberglass mesh suitable for the **Finoclima**® ETIC systems. Certified according to ETAG 004.

WEIGHT	SQUARE OPENING	COLOUR	DIMENSIONS
160 g/m <sup>2</sup>	4x4 mm	White	1x50 m (50 m <sup>2</sup> )



### CLima•CORNER pvc corner bead with mesh

PVC corner bead with alkali-resistant fiberglass mesh 145 g/m<sup>2</sup> certified according to ETAG 004. Suitable for the **Finoclima**® ETIC systems.

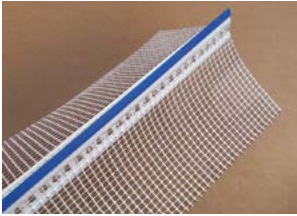
MESH WIDTH	MESH SQUARE OPENING	LENGTH	ITEMS/BOX
100x100 mm	4x4 mm	2.5 m	50
100x150 mm			



## CLIMA•FLEX flexible pvc corner bead with mesh

Flexible, variable angle PVC corner bead with alkali-resistant fiberglass mesh 145 g/m<sup>2</sup> certified according to ETAG 004. For the protection of non vertical edges (90°) in the **Finoclima**® ETIC systems.

MESH WIDTH	MESH SQUARE OPENING	LENGTH	ITEMS/BOX
100x100 mm	4x4 mm	25 m roll	1



## CLIMA•DRIP pvc profile with drip ledge with mesh

PVC profile with drip ledge with alkali-resistant fiberglass mesh 145 g/m<sup>2</sup> certified according to ETAG 004. Suitable for the **Finoclima**® ETIC systems.

MESH WIDTH	MESH SQUARE OPENING	LENGTH	ITEMS/BOX
100x100 mm	4x4 mm	2.5 m	25



## CLIMA•FIX anchors with plastic pins

Anchors with plastic pins for the **Finoclima**® ETIC systems. Suitable for concrete, masonry and stone. Available from 9 cm to 16 cm, depending on the thickness of the thermal insulation board, the type and quality of the substrate. Certified according to ETAG 014.

DIMENSIONS (mm)	INSULATION THICKNESS	ITEMS/PACKAGING
60x10x90	70 mm	200
60x10x120	90 mm	
60x10x140	110 mm	
60x10x160	120 mm	



## CLIMA•FIX plastic dowel discs (without pin)

Plastic dowel discs for mechanical fastening of the thermal insulation boards of **Finoclima**® ETIC systems on drywall surfaces, in combination with the appropriate screws or dowels. Suitable for fiber boards, cement boards, outdoor plaster boards, sheet metals (panels), OSB, wood, etc.

DIMENSIONS	ITEMS/PACKAGING
Ø 60 mm	100



## CLIMA•FIX EPS plugs

Expanded polystyrene plugs for covering the anchors of the **Finoclima**® ETIC systems.

DIMENSIONS	COLOUR	ITEMS/PACKAGING
Ø 67 mm	White or grey	200

# 6

## ■ decorative mortars

- water repellent coloured renders
- microcement mortars
- impregnation products & varnishes



## 6.1 water repellent coloured renders



### SD 60 retro

#### coloured decorative water repellent final-coat render

**DESCRIPTION:** Coloured, polymer-modified, cement-based final-coat render. Thanks to its carefully developed formula, the final colour is stable against weathering. It exhibits strong adhesion to the substrate, increased elasticity and significantly reduced water permeability compared to common final-coat renders.

It is produced in white and can be easily coloured with NATURAL COLOURS pigments in powder form. Classified as general purpose (GP) mortar type CS II, W1 according to European standard EN 998-1.

**APPLICATIONS:** Used as a coloured, decorative finishing coat on walls after the base-coat render, especially in buildings with traditional architecture. Applied with a plastering machine or manually. Suitable for interior and exterior use.

PACKAGING	ITEMS/PAL.
25 kg paper bag	60

**CONSUMPTION:** Approximately 6-7 kg/m<sup>2</sup> for a 5 mm thick layer.

## 6.2 microcement mortars



### SD 70 décor

#### microcement mortar for floor & wall applications

**DESCRIPTION:** Fiber-reinforced, polymer-modified microcement mortar, for creating smooth and durable surfaces, using the traditional surface finishing technique on interior and exterior walls and floors. Exhibits high resistance to abrasion, excellent bonding with the substrate and excellent resistance to moisture. It is produced in white and can be easily coloured with NATURAL COLOURS pigments in powder form. Classified as general purpose mortar (GP) type CS IV, W2 according to European standard EN 998-1.

**APPLICATIONS:** Suitable for creating microcement coatings on walls and floors, and for special constructions such as pools, custom-made bathtubs and washbasins, tables, stairs, etc., adding to constructions the unique aesthetics of Cycladic architecture. Suitable for both interior and exterior applications.

PACKAGING	ITEMS/PAL.
25 kg paper bag	60

**CONSUMPTION:** Approximately 1.5-1.6 kg/m<sup>2</sup> for a 1 mm thick layer.



### SD 80 décor·flex

#### flexible microcement mortar for floor & wall applications

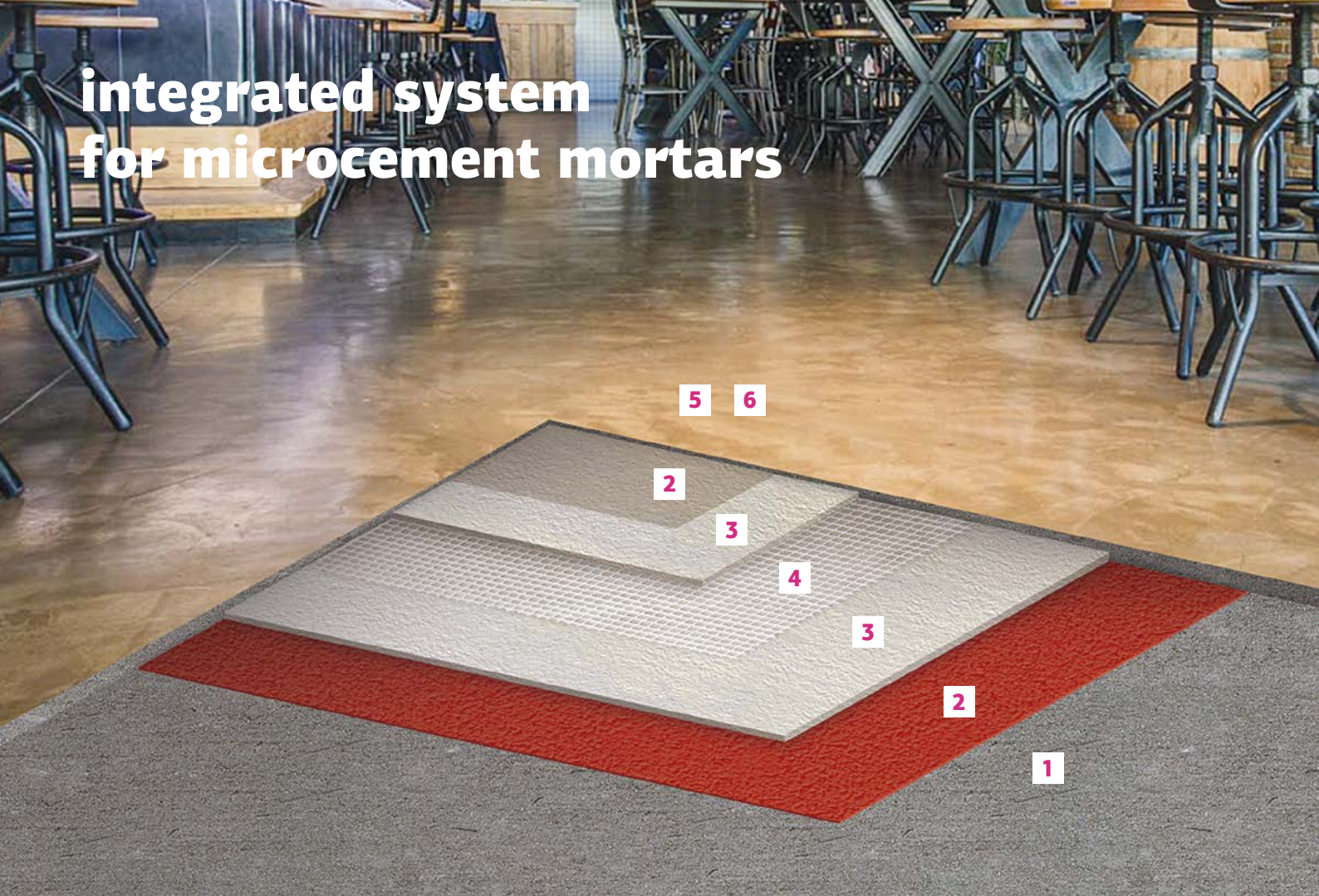
**DESCRIPTION:** Flexible, fiber-reinforced, polymer-modified high-strength microcement mortar, for the creation of aesthetically distinctive surfaces on walls and floors. It exhibits high elasticity, excellent abrasion resistance, outstanding adhesion to the substrate, and superior resistance to moisture. It is produced in white and can be easily coloured using NATURAL COLOURS pigments in powder form. Classified as class PCC R2 cementitious mortar for non-structural repairs of concrete structures according to European standard EN 1504-3.

**APPLICATIONS:** Suitable for application on floors and walls, on substrates such as concrete, reinforced plaster, gypsum boards, cement boards, existing floors (mosaic, natural stone, tiles), as well as for special constructions such as built-in bathtubs, washbasins, swimming pools, tables, stairs, etc. It offers a characteristic Cycladic architectural appearance and is an ideal solution for renovations, restorations, and new constructions. Suitable for both interior and exterior applications.

PACKAGING	ITEMS/PAL.
25 kg paper bag	60

**CONSUMPTION:** Approximately 1.5-1.6 kg/m<sup>2</sup> for a 1 mm thick layer.

# integrated system for microcement mortars



## 1 SUBSTRATE

## 2 SURFACE PREPARATION

### **fino•contact**

Adhesion promoting primer  
with quartz aggregates

### **acrylic primer**

Water-based acrylic deep-penetrating primer

## 3 SUBSTRATE LEVELLING

### **SD 300**

Polymer-modified cementitious mortar  
for the preparation & finishing  
of microcement surfaces

## 4 SUBSTRATE REINFORCEMENT

### **fiberglass mesh**

Flexible alkali-resistant fiberglass mesh  
Weight 160 g/m<sup>2</sup>

## 5 FINAL DECORATIVE COATING

### **SD 70 décor**

Microcement mortar  
for floor & wall applications

### **SD 80 décor•flex**

Flexible microcement mortar  
for floor & wall applications

### **SD 90 décor•micro flex**

Elastic microcement mortar  
for floor & wall applications

## 6 FINAL SURFACE PROTECTION

### **decodur acrylic**

Acrylic varnish for stone and building materials

### **decodur coat•pu 2k gloss**

2-component aliphatic polyurethane varnish  
with gloss finish

### **decodur coat•pu 2k mat**

2-component aliphatic polyurethane varnish  
with mat finish



## CEMENTITIOUS MORTARS COLOURING

### **natural colours**

Natural inorganic pigments in powder form





## SD 90 décor•micro flex

elastic microcement mortar for floor & wall applications

**DESCRIPTION:** Elastic, extra-fine graded, highly-durable microcement mortar, for floor and wall applications, indoors and outdoors.

It exhibits high flexibility, increased mechanical strength and durability, as well as resistance to moisture. It is produced in white but can also be easily coloured with NATURAL COLOURS pigments in powder form. Classified as cementitious product for surface protection systems for concrete according to European standard EN 1504-2, type PCC R3 mortar for structural and non-structural repair of concrete structures according to EN 1504-3, and type CT-C25-F9-AR2 screed material according to EN 13813.

**APPLICATIONS:** Used to create uniform, seamless, durable, decorative microcement coatings on floors and walls, as well as custom-made structures like bathtubs, washbasins, countertops, furnishings, etc. Due to its high flexibility it is ideal for surfaces that are subject to intense stresses (movements, vibrations, etc.), e.g. gypsum boards, cement boards, underfloor heating applications, etc. It can also be applied on old mosaics, tiles or natural stones. It is ideal for renovations, restorations and new constructions. Suitable for both interior and exterior applications.

PACKAGING	ITEMS/PAL.
10kg plastic container	40
20kg paper bag	60

**CONSUMPTION:** Approximately 1.2-1.4 kg/m<sup>2</sup> for a 1 mm thick layer.



## SD 300

polymer-modified cementitious mortar for the preparation & finishing of microcement surfaces

**DESCRIPTION:** Polymer-modified, fiber-reinforced, cement-based mortar. It exhibits high mechanical strength, high abrasion resistance, flexibility and resistance to moisture and frost. It is produced in white but can also be easily coloured with NATURAL COLOURS pigments in powder form. Classified as CT-C30-F9-AR2 type cementitious floor screed material according to European standard EN 13813.

**APPLICATIONS:** It is suitable for the preparation and reinforcement of surfaces to be covered with microcement toppings, as well as for the final finish of surfaces providing rustic-microcement aesthetics.

It is applied on any type of substrate, i.e. concrete, render, masonry, cement/gypsum boards, old tiled surfaces, etc.

Suitable for both interior and exterior applications.

PACKAGING	ITEMS/PAL.
25kg paper bag	60

**CONSUMPTION:** Approximately 1.5-1.6 kg/m<sup>2</sup> for a 1 mm thick layer.



## natural colours

natural inorganic pigments in powder form

**DESCRIPTION:** High quality, natural, inorganic pigments, for colouring of mortars.

They provide outstanding colour stability and resistance against UV radiation.

Available in 10 bases (black, brick-red, light brown, dark brown, reddish brown, orange, green, blue, ochre and white), which make up the 120 shades of NATURAL COLOUR CREATIONS colour chart.

**APPLICATIONS:** Ideal for colouring SD 70 DÉCOR, SD 80 DÉCOR•FLEX and SD 90 DÉCOR•MICRO FLEX cementitious mortars, and cementitious plasters SD 60 RETRO, FC 1200, LK 15 and LK 20.

Suitable for use indoors and outdoors.

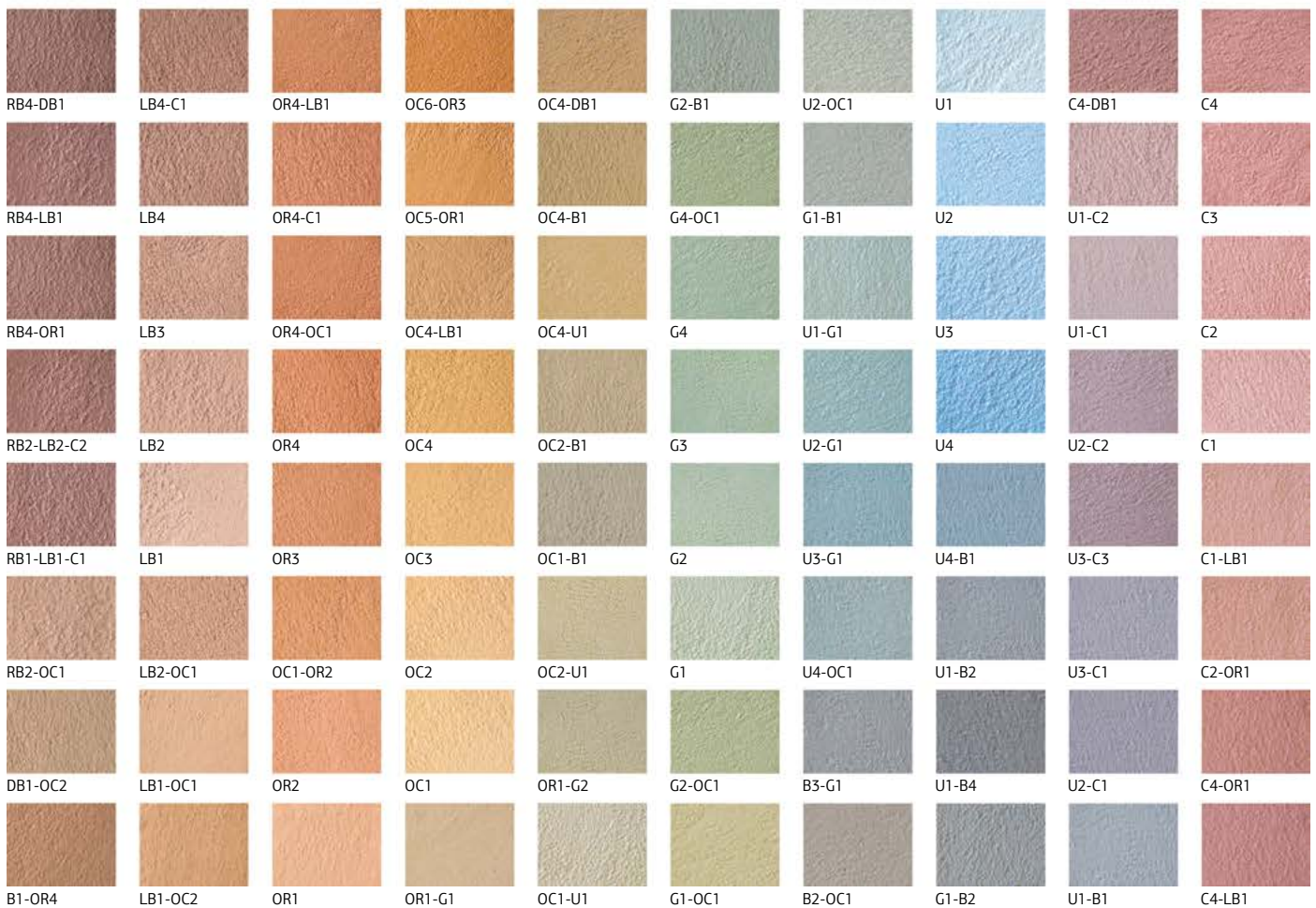
PACKAGING	ITEMS/BOX
50g plastic container	96



# natural colour creations

## COLOUR CHART

NATURAL COLOUR CREATIONS colour chart includes 120 carefully selected shades that result by combining one or more of the 10 colour bases of the natural inorganic pigments **NATURAL COLOURS** with a bag of microcement mortar or any other white **FINOMIX** dry mortar.



ATTENTION: colour representation in the chart is indicative only.

**B:** black, **C:** ceramic-red, **LB:** light brown, **DB:** dark brown, **RB:** red-brown, **OR:** orange, **G:** green, **U:** blue, **OC:** ocre, **W:** white

The capital letters indicate the 10 bases. The numbers indicate the 50 g containers of pigment required per bag of white mortar.

## 6.3 impregnation products & varnishes



### decodur acrylic

acrylic varnish for stone and building materials

**DESCRIPTION:** Ready-to-use, transparent, solvent-based acrylic impregnating varnish, for the protection of natural stone and other building materials.

It exhibits excellent UV resistance, very strong adhesion and penetrating ability strengthening the structure of the materials while at the same time sealing and brightening-up their natural colour giving a slightly glossy appearance.

It doesn't peel off nor yellow over time providing long lasting protection from water, pollution and wear.

**APPLICATIONS:** It is suitable for the impregnation and protection of natural stone, stamped concrete, microcement mortars, decorative bricks, roof tiles, etc.

Suitable for walls and floors, indoors and outdoors.

PACKAGING	ITEMS/BOX	ITEMS/PAL.
1 lt metal container	8	288
5 lt metal container		115
20 lt metal container		33

**CONSUMPTION:** Approximately 0.10-0.20 lt/m<sup>2</sup> depending on the surface's absorbcency.



### sil-proof 5050

silicone-based solution for waterproofing

**DESCRIPTION:** Ready-to-use, solvent-based, transparent, silicon-siloxane solution with excellent penetrating properties and UV-resistance, for the waterproofing of inorganic substrates.

It provides the surfaces with a strong and exceptionally durable hydrophobic profile without leaving marks or stains and without affecting their colour and water-vapour transpiration capability.

It protects the surfaces from moisture ingress, eliminates efflorescence and increases their resistance to frost.

Classified as hydrophobic impregnation product (H) for the protection of concrete structures according to European standard EN 1504-2.

**APPLICATIONS:** Used in order to provide water repellency and protection against moisture penetration on natural and artificial stones (marble, stone, granite).

Also on renders, fair-faced concrete, AAC blocks, roof tiles, tile grouts, decorative bricks, etc.

Ideal for the protection of the decorative mortars SD 60 RETRO and FC 1200, as well as the microcement coatings SD 70 DÉCOR, SD 80 DÉCOR•FLEX and SD 90 DÉCOR•MICRO FLEX.

PACKAGING	ITEMS/PAL.
3 lt metal container	132
20 lt metal container	33

**CONSUMPTION:** Depending on the surface's absorbcency.



## sil-proof 5060 nano

water-repelling nano-emulsion for the protection of absorbent surfaces

**DESCRIPTION:** Ready-to-use, aqueous emulsion of nano-molecular structure with excellent penetrating properties and UV-resistance for the hydrophobic impregnation of porous surfaces indoors and outdoors.

It provides the surfaces with a strong and exceptionally durable hydrophobic profile without leaving marks or stains and without affecting their colour and water-vapour transpiration capability.

It protects the surfaces from moisture ingress, eliminates efflorescence and increases their resistance to frost.

Classified as hydrophobic impregnation product (H) for the protection of concrete structures according to European standard EN 1504-2.

**APPLICATIONS:** Used in order to provide water repellency and protection against moisture penetration on natural and artificial stones (marble, stone, granite).

Also on renders, fair-faced concrete, AAC blocks, roof tiles, tile grouts, decorative bricks, etc.

Ideal for the protection of the decorative mortars SD 60 RETRO and FC 1200, as well as the microcement coatings SD 70 DÉCOR, SD 80 DÉCOR•FLEX and SD 90 DÉCOR•MICRO FLEX.

Ideal for indoor applications where solvent smells are undesirable.

PACKAGING	ITEMS/BOX	ITEMS/PAL.
1 kg plastic container	14	504
5 kg plastic container		112
20 kg plastic container		39

**CONSUMPTION:**

Depending on the surface's absorbency.



## sil-proof 5080

hydrophobic & oleophobic impregnation

**DESCRIPTION:** Ready-to-use aqueous solution based on acrylic fluorinated polymers, for the protection of porous surfaces against water ingress and oil stains.

It imparts long lasting water and oil repellency without affecting the water-vapour permeability and the colour of surfaces.

Additionally, it protects materials from water and oil penetration, thus preventing staining from oily dirt and mold growth, while it increases their resistance to frost and eliminates efflorescence.

It doesn't affect the colours of the materials and doesn't form film on the surfaces.

It doesn't contain organic solvents.

Classified as hydrophobic impregnation product (H) for the protection of concrete structures according to European standard EN 1504-2.

**APPLICATIONS:** Used in order to provide water and oil repellency on renders, tile grouts, natural and artificial stones, concrete, decorative bricks, masonry, AAC blocks, etc.

Ideal for the protection of the decorative mortars SD 60 RETRO and FC 1200, as well as the microcement coatings SD 70 DÉCOR, SD 80 DÉCOR•FLEX and SD 90 DÉCOR•MICRO FLEX.

Thanks to its oleophobic composition, it contributes to the protection of surfaces from graffiti, significantly facilitating their cleaning.

Ideal for indoor applications where solvent smells are undesirable.

PACKAGING	ITEMS/BOX	ITEMS/PAL.
1 kg plastic container	14	504
5 kg plastic container		112
20 kg plastic container		39

**CONSUMPTION:**

Depending on the surface's absorbency.



## decodur coat•pu 2k gloss

two-component aliphatic polyurethane varnish with gloss finish

**DESCRIPTION:** Two-component, solvent-based, aliphatic polyurethane varnish, with a glossy finish. It exhibits high UV resistance (does not turn yellowish) due to UV filters it contains, and high mechanical strength.

It significantly increases wear resistance of microcement coatings, while it protects from oil stains, water ingress and dirt.

Dilute 10-15% with PU•SOLVENT.

**APPLICATIONS:** Used for the protection of microcement surfaces, surfaces made of concrete, natural and artificial stone, wood, metal, polyester, epoxy and industrial floors, etc.

Ideal for coastal areas and as protective coating over swimming pools epoxy paints, enhancing their resistance against UV radiation.

PACKAGING	ITEMS/BOX
1 kg (0.7 kg A + 0.3 kg B)	8
4 kg (2.8 kg A + 1.2 kg B)	

**CONSUMPTION:** 0.05-0.10 kg/m<sup>2</sup> per layer.



## decodur coat•pu 2k mat

two-component aliphatic polyurethane varnish with matte finish

**DESCRIPTION:** Two-component, solvent-based, aliphatic polyurethane varnish, with a matte finish. It exhibits high UV resistance (does not turn yellowish) due to UV filters it contains, and high mechanical strength.

It significantly increases wear resistance of microcement coatings, while it protects from oil stains, water ingress and dirt.

Dilute 20% with PU•SOLVENT.

**APPLICATIONS:** Used for the protection of microcement surfaces, surfaces made of concrete, natural and artificial stone, wood, metal, polyester, epoxy and industrial floors, etc.

PACKAGING	ITEMS/BOX
1 kg (0.7 kg A + 0.3 kg B)	8
4 kg (2.8 kg A + 1.2 kg B)	

**CONSUMPTION:** 0.05-0.10 kg/m<sup>2</sup> per layer.



## pu•solvent

thinner for polyurethane varnishes

**DESCRIPTION:** Solvent for the polyurethane PU varnishes DECODUR COAT•PU 2K GLOSS and DECODUR COAT•PU 2K MAT.

**APPLICATIONS:** It is added in polyurethane-based varnishes DECODUR COAT•PU 2K GLOSS and DECODUR COAT•PU 2K MAT, as well as for the cleaning of surfaces and tools after application.

PACKAGING	ITEMS/BOX
1 lt metal container	8

**CONSUMPTION:**

- 10-20% dilution of DECODUR COAT•PU 2K GLOSS.
- 20% dilution of DECODUR COAT•PU 2K MAT.

# 7

## ■ building mortars & premixed renders

- building mortars
- premixed renders
- auxiliary materials





## 7.1 building mortars



### LK 10

#### masonry mortar

**DESCRIPTION:** Premixed, cement-based masonry mortar, used for building any size of bricks, cement blocks and other building materials. Classified as general purpose (GP) masonry mortar type M5, A1 according to the European standard EN 998-2.

**APPLICATIONS:** For building various types of building materials such as bricks, thermal-insulating bricks, blocks, natural stone, etc. Can also be used for minor repair works. For indoor and outdoor applications.

PACKAGING	ITEMS/BOX	ITEMS/PAL.
5 kg plastic bag GREY	4	144
30 kg paper bag GREY		48

**CONSUMPTION:** Approximately 16-18 kg/m<sup>2</sup> of masonry, for 6x9x19 cm bricks.



### LK 15

#### polymer-modified stone & marble mortar

**DESCRIPTION:** Cement-based, polymer-modified masonry mortar, suitable for building and grouting natural stone and cement-based building elements. It is produced in white colour and can be easily coloured with NATURAL COLOURS pigments in powder form. Classified as M10 type masonry mortar according to European standard EN 998-2.

**APPLICATIONS:** Used for the building of natural stones, as well as laying marble and other natural stones on floors, stairs, marble sills, etc. Can also be used for minor repair works. Suitable for both interior and exterior applications.

PACKAGING	ITEMS/PAL.
30 kg paper bag WHITE/COLOURED	48

**CONSUMPTION:** Approximately 16-18 kg/m<sup>2</sup> for a 1 cm thick layer.



### LK 20

#### polymer-modified cementitious mortar for grouting of stone masonry

**DESCRIPTION:** Cement-based, polymer-modified mortar, for building and grouting natural stones. It can be easily coloured with NATURAL COLOURS pigments in powder form. Classified as masonry mortar class M20 according to the European standard EN 998-2, and as grouting mortar class CG2 according to the European standard EN 13888.

**APPLICATIONS:** Used for building and grouting natural stones with joint widths 5-50 mm. Suitable for walls and floors, indoors and outdoors.

PACKAGING	ITEMS/PAL.
25 kg paper bag WHITE/COLOURED	60

**CONSUMPTION:** Depending on the dimensions of the stone, the width and thickness of the joint.



### LK 30

#### coloured fiber-reinforced cementitious mortar for roof tiles

**DESCRIPTION:** Polymer-modified, fiber-reinforced, cement-based mortar, for the installation of roof tiles. Classified as M20 type mortar according to European standard EN 998-2. Available in white and 3 colours: brick-red, ochre and grey.

**APPLICATIONS:** Ideal for the safe adhesion of ridges, gables, as well as for repairing and sealing gaps in all types of roof tiles. Suitable for building and grouting natural stones or other structural materials, as well as for minor repair works.

PACKAGING	ITEMS/PAL.
30 kg paper bag WHITE/COLOURED	48

**CONSUMPTION:** Approximately 15 kg/m<sup>2</sup> for a 1 cm thick layer.



## LK 40 block

### adhesive mortar for thermal insulating blocks

**DESCRIPTION:** Fiber-reinforced, cement-based, thin-layer masonry mortar for thermal insulating vertically perforated blocks. It can also be used for laying all types of clay bricks. It exhibits excellent workability and strong adhesion to insulating blocks and other similar building materials. Classified as a M10, A1 type masonry mortar according to European standard EN 998-2.

**APPLICATIONS:** Used as a thin-layer mortar for the construction of thermal insulating masonry with zero joint width, using thermal insulating vertically perforated blocks. Suitable for both interior and exterior applications.

PACKAGING	ITEMS/PAL.
25 kg paper bag	60

**CONSUMPTION:** Depends on the application and the type of blocks. Indicatively, for blocks of 25 cm in width, a 25 kg bag yields about 3.5-4.5 m<sup>2</sup>.



## BET C 20/25

### premixed dry concrete type C20/25-XC1

**DESCRIPTION:** Ready-mixed dry concrete, strength class C20/25-XC1 with a maximum grain size of 10 mm. It exhibits high mechanical strength, volume stability, and excellent workability. Classified as concrete of exposure class XC1 and compressive strength class C20/25 according to the Greek Concrete Technology Regulation (CTR) 2016 and the European standard EN 206.

**APPLICATIONS:** Used for the construction of reinforced concrete lintels and wall beams, for minor repair and restoration works, as well as for fair-faced concrete surfaces, ramps, curbs, steps, sidewalks, walkways, patios, floor screeds, and any other construction work requiring concrete of equivalent exposure class and compressive strength. Suitable for both interior and exterior applications.

PACKAGING	ITEMS/PAL.
30 kg paper bag	48

**CONSUMPTION:** 30 kg of dry material yield approximately 15 lt of fresh concrete.



## anti•lime powder

### mortar plasticizer in powder form

**DESCRIPTION:** Plasticizing agent in powder form which can completely replace lime in cementitious mortars, significantly improving their workability and final strength, and increasing their productivity. It doesn't contain corrosive ingredients for metals and doesn't cause skin burns.

**APPLICATIONS:** Used for the preparation of renders, as well as masonry and paving mortars, giving them the plasticity of lime-cement mortars, either applied by hand or a pumping machine.

PACKAGING	ITEMS/PAL.
30 kg paper bag	40

**CONSUMPTION:** Approximately 5-10 kg / 50 kg of cement. Consumption depends on the nature and grain size of the sand, as well as the intended use of the mortar.



## fino•carb 100

### calcium carbonate filler

**DESCRIPTION:** Fine natural calcium carbonate powder of high whiteness.

**APPLICATIONS:** FINO•CARB is used:

- For coverage of glass greenhouses
- For coverage of roofs
- As a mineral filling material for polyester or other resins.

PACKAGING	ITEMS/PAL.
25 kg paper bag	60

**CONSUMPTION:** Depending on the application.

new



## super 52,5

cement-based repairing mortar

■ Class R2 ■

**DESCRIPTION:** Cement-based pre-mixed material, enhanced with reinforcing additives, suitable for non-structural repairs of concrete elements, as well as for the repairing, pointing and rendering of masonry. It exhibits high mechanical strengths, great resistance to adverse weather conditions and to abrasion, strong adhesion to the substrate, and high water repellency.

Produced in white and grey colours. White SUPER 52,5 can be easily coloured with NATURAL COLOURS pigments in powder form.

Classified as class CC R2 cementitious mortar for non-structural repairs of concrete structures according to European standard EN 1504-3.

**APPLICATIONS:** Used for the preparation of top quality cementitious mortars for repairing, waterproofing, plastering and floor-levelling applications, for mortar coving around roofs, and for any other work that requires the use of cement mortar. It can be mixed with other types of cement to enhance mechanical strengths. Suitable for both interior and exterior applications.

PACKAGING	ITEMS/BOX	ITEMS/PAL.
4 kg plastic bag WHITE	4	144
4 kg plastic bag GREY	4	144

**CONSUMPTION:** Depending on the application.



## 7.2 premixed renders



### SP 20

polymer-modified rough cast render

**DESCRIPTION:** Cement-based render, modified with polymers and other special admixtures, for the preparation of the surfaces to be rendered.

It exhibits high mechanical strengths, strong adhesion to the substrate and excellent workability either when applied with a pumping machine or by hand.

Classified as general purpose (GP) mortar type CS IV, W1 according to the European standard EN 998-1.

**APPLICATIONS:** Used to create a strong, rough layer on the surfaces that are going to be rendered. It is applied before base-coat render or one-coat render producing a strong layer with increased adhesion strength on the building elements that provides the ideal substrate for the subsequent render layers to be applied.

Can also be used for minor repair works. Suitable for both interior and exterior applications.

PACKAGING	ITEMS/PAL.
30 kg paper bag	48

**CONSUMPTION:** Approximately 6-7 kg/m<sup>2</sup> for a 5 mm thick layer.



### SB 30

polymer-modified base-coat render

**DESCRIPTION:** Cement-based render, modified with polymers and other special admixtures, used to create the base coat of render.

It exhibits high mechanical strengths, strong adhesion to the substrate and excellent workability either when applied with a pumping machine or by hand.

Classified as general purpose (GP) mortar type CS II, WO according to the European standard EN 998-1.

**APPLICATIONS:** Applied after the rough cast render (SP 20) in order to level the wall surface prior to the application of the final-coat render (ST 40 or ST 45 FINE) or other wall coverings, e.g. ceramic tiles, decorative microcement coatings, etc. Can also be used for minor repair works.

Suitable for both interior and exterior applications.

PACKAGING	ITEMS/PAL.
30 kg paper bag	48

**CONSUMPTION:** Approximately 15 kg/m<sup>2</sup> for a 10 mm thick layer.



## ST 40

### water repellent polymer-modified final-coat render

**DESCRIPTION:** Ready-mixed, cement-based, final-coat render, with high quality white marble sand of selected grain size, modified with polymers and other special admixtures, used for the smooth finishing of the wall surfaces.

It exhibits high mechanical strengths, strong adhesion to the substrate, reduced water permeability of the final surface and excellent workability either when applied with a pumping machine or by hand.

Classified as general purpose (GP) mortar type CS II, W1 according to the European standard EN 998-1.

**APPLICATIONS:** Applied after the base-coat render (SB 30) in order to produce a smooth final surface without cracks ready to be painted.

Can also be used for minor repair works.

Suitable for both interior and exterior applications.

PACKAGING	ITEMS/PAL.
25 kg paper bag WHITE	60

**CONSUMPTION:** Approximately 6-7 kg/m<sup>2</sup> for a 5 mm thick layer.



## ST 45 fine

### fine-grained, water repellent polymer-modified final-coat render

**DESCRIPTION:** Ready-mixed, cement-based, fine-grained render, with high quality white marble sand, modified with polymers and other special admixtures, used for the smooth finishing of the wall surfaces. It exhibits high water repellency and mechanical strengths, strong adhesion to the substrate, reduced water permeability of the final surface and excellent workability either when applied with a pumping machine or by hand.

Classified as general purpose (GP) mortar type CS II, W1 according to the European standard EN 998-1.

**APPLICATIONS:** Applied after the base-coat render (SB 30) in order to produce an exceptionally smooth, final surface without cracks ready to be painted.

Can also be used for minor repair works.

Suitable for both interior and exterior applications.

PACKAGING	ITEMS/PAL.
25 kg paper bag WHITE	60

**CONSUMPTION:** Approximately 5-6 kg/m<sup>2</sup> for a 3-4 mm thick layer.



## SM 50

### water repellent polymer-modified one-coat render

**DESCRIPTION:** Ready-mixed, cement-based, one-coat render, with high quality white marble sand of selected grain size, modified with polymers and other special admixtures, used instead of the base-coat and the final-coat render producing a level and smooth final surface.

It exhibits high mechanical strengths, strong adhesion to the substrate, reduced water permeability of the final surface and excellent workability either when applied with a pumping machine or by hand. Classified as one-coat (OC) mortar type CS III, W1 according to the European standard EN 998-1.

**APPLICATIONS:** Applied after the rough cast render (SP 20), it replaces the base-coat (SB 30) and final-coat render (ST 40 or ST 45 FINE).

It enables the application of the thickness required for the levelling of the masonry without sagging, while it produces a smooth final surface without cracks ready to be painted.

Can also be used for minor repair works.

Suitable for both interior and exterior applications.

PACKAGING	ITEMS/PAL.
25 kg paper bag WHITE	60

**CONSUMPTION:** Approximately 14-15 kg/m<sup>2</sup> for a 10 mm thick layer.

new



## SM 55 rapid

### fast-setting fiber-reinforced one-coat render

**DESCRIPTION:** Fast-setting, fiber-reinforced, cement-based mortar, modified with polymers and other special admixtures, for repairs of render surfaces on old and new structures. It exhibits high mechanical strengths, minimal shrinkage, strong adhesion to the substrate and resistance to moisture.

Classified as general purpose (GP) mortar type CS II, W1 according to European standard EN 998-1.

**APPLICATIONS:** Ideal for quick repairs and restoration of render surfaces, as well as for fixing broken corners in masonry and other minor repairs.

Also suitable for repairing several defects created during construction works, e.g. electrical, plumbing, framing works.

Suitable for both interior and exterior applications.

PACKAGING	ITEMS/PAL.
20 kg paper bag WHITE	72

**CONSUMPTION:** Approximately 12-14 kg/m<sup>2</sup> for a 10 mm thick layer.



## fino•superplast

### extra-strength fiber-reinforced fine-grained polymer-modified finish-coat render

**DESCRIPTION:** Polymer-modified, fine-grained cementitious mortar, reinforced with synthetic micro-fiber, ideally used as finish-coat render. It exhibits strong adhesion to the substrate, high mechanical strengths, enhanced water repellence, ease of application and excellent finishing.

It is classified as general purpose (GP) rendering mortar type CS III, W1 according to the European standard EN 998-1.

**APPLICATIONS:** Used as final-coat render in situations that demand extra-fine finished texture and enhanced durability. Suitable for indoors and outdoors, on surfaces like:

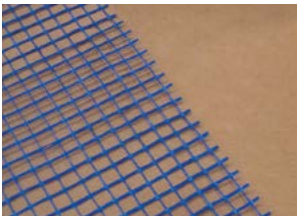
- Base-coat renders.
- Cement-blocks, AAC blocks or other type of lightweight blocks, thermal-insulating or regular bricks, etc.
- Fair-faced or typical concrete structures.
- Rough plaster surfaces (splits, graffiato, etc.) that need to become even.

PACKAGING	ITEMS/PAL.
25 kg paper bag GREY	60

**CONSUMPTION:** Approximately 1.3-1.4 kg/m<sup>2</sup> for a 1 mm thick layer.



## 7.3 auxiliary materials



### plaster reinforcement fiberglass mesh

Alkali-resistant fiberglass mesh, for the reinforcement of base-coat renders and cementitious mortars, in order to avoid cracking.

WEIGHT	SQUARE OPENING	COLOUR	DIMENSIONS
110 g/m <sup>2</sup>	10x10 mm	Blue	1x50 m (50 m <sup>2</sup> )



### polypropylene fibers

Alkali-resistant, polypropylene fibers with high dispersion capability, for the reinforcement of ready-mixed concrete, renders and floor screeds, preventing shrinkage-cracking.

SIZE	CONSUMPTION	PACKAGING	ITEMS/BOX
6-12 mm	900-1200 g/m <sup>3</sup>	900 g/item	13

# 8

■ primers





## 8. primers



### fino•contact

#### adhesion promoting primer with quartz aggregates

**DESCRIPTION:** Ready-to-use adhesion promoting primer based on acrylic resins, selected quartz aggregates and special additives. It exhibits excellent bonding with any kind of substrate providing a rough alkaline-resistant final surface. It is coloured red in order to be easily identified on the applied surfaces. Low VOC (Volatile Organic Compounds) content in conformity with the Directive 2004/42/EC.

**APPLICATIONS:** Suitable to be applied on any type of substrate, e.g. concrete, floor screeds, masonry, AAC blocks, render, plaster, etc., and especially on very smooth and non-absorptive substrates like ceramic tiles, natural and artificial stones and granites, cement-boards, gypsum-boards, fiber-boards, thermal-insulating boards, metal, etc. Once dry, it forms a rough, durable surface that promotes adhesion of cement, lime, gypsum-based mortars and ready-to-use acrylic based renders.

It can be used to promote the adhesion of renders, plasters, tile adhesives, microcement decorative mortars, self-levelling floor screeds, etc. Suitable for both interior and exterior applications.

PACKAGING	ITEMS/BOX	ITEMS/PAL.
1 kg plastic container	12	432
5 kg plastic container		96
15 kg plastic container		44
20 kg plastic container		24

**CONSUMPTION:** Approximately 0.3-0.4 kg/m<sup>2</sup> depending on the substrate's type.



### acrylic primer

#### water-based acrylic deep-penetrating primer

**DESCRIPTION:** Aqueous dispersion of acrylic resins which, due to the very small size of their particles, achieve exceptionally high penetration in porous surfaces, thus stabilizing them and enabling the proper adhesion to them. Contains no organic solvents. Low VOC (Volatile Organic Compounds) content in conformity with the Directive 2004/42/EC, and APEO-free in conformity with REACH regulation.

**APPLICATIONS:** It is applied on porous surfaces like renders, AAC blocks, bricks, concrete, floor-screeds, gypsum boards, cement-boards, fiber-boards, etc. It is used to stabilize and reduce water-absorption of the substrate prior to the application of tile adhesives, microcement mortars (SD 90), brushable waterproofing membranes like HYDROSEAL 8000 SUPER•ELASTIC, HYDROFLEX HYBRID•PU and HYDROFLEX•ACRYL, as well as water-based paints. Suitable for both interior and exterior applications.

PACKAGING	ITEMS/BOX	ITEMS/PAL.
1 kg plastic container	14	504
5 kg plastic container		112
20 kg plastic container		39

**CONSUMPTION:** Approximately 0.1-0.2 kg/m<sup>2</sup> depending on the surface's absorbency.



### primer FP-31

#### water-based acrylic primer for sealing cementitious substrates

**DESCRIPTION:** Acrylic primer in water dispersion, for stabilizing and sealing cementitious substrates prior to the application of self-levelling compounds and levelling floor screeds.

It penetrates deeply in the substrate while at the same time it seals the surface. It improves adhesion mortar and substrate while significantly reduces the formation of bubbles in the levelling compounds. It shows very low emission of Volatile Organic Compounds (VOC).

**APPLICATIONS:** It is used for the stabilization and sealing of cementitious substrates prior to the application of self-levelling compounds (FLOW 1•10 RAPID, FLOW 3•30 ECO•RAPID, FLOW 5•50 RAPID), industrial floors and levelling floor screeds.

PACKAGING	ITEMS/PAL.
5 kg plastic container	112
20 kg plastic container	39

**CONSUMPTION:** Approximately 0.1-0.2 kg/m<sup>2</sup> depending on the dilution rate and the surface's absorbency.



## eq•primer 5200

plaster primer for equalizing the substrate's absorbance

**DESCRIPTION:** Water-based acrylic plaster primer, used to regulate the absorbency of surfaces prior to the application of renders. It makes the substrate partially hydrophobic and thus ensures that the render will not be dehydrated. Contains no organic solvents.

**APPLICATIONS:** It is applied before the application of the decorative final-coat renders SD 60 RETRO and FC 1200 in order to ensure colour uniformity. Additionally, on very absorbent substrates such as AAC blocks, cement-blocks, etc., in order to prevent the dehydration of the renders to be applied.

PACKAGING	ITEMS/BOX	ITEMS/PAL.
1 kg plastic container	14	504
5 kg plastic container		112
20 kg plastic container		39

**CONSUMPTION:** Approximately 0.10 kg/m<sup>2</sup> depending on the surface's absorbency.



## hydro•primer

primer for the acrylic brushable elastomeric waterproofing roof-coating

**DESCRIPTION:** Aqueous dispersion of micro-molecular acrylic polymers with enhanced substrate-penetrating properties which, when applied to porous substrates, creates the appropriate conditions for the adhesion of the elastomeric waterproofing coatings HYDROFLEX•ACRYL and HYDROFLEX HYBRID•PU.

**APPLICATIONS:** Ready-to-use primer that penetrates deep into the substrate, decreasing its absorbency and increasing its cohesion.

It also operates as a binding layer between the substrate and the elastomeric waterproofing coatings HYDROFLEX•ACRYL and HYDROFLEX HYBRID•PU.

Applied on surfaces such as concrete, plaster, gypsum boards, cement boards, etc.

PACKAGING	ITEMS/PAL.
5 kg plastic container	96
20 kg plastic container	24

**CONSUMPTION:** Approximately 0.1-0.2 kg/m<sup>2</sup> depending on the surface's absorbency.



## epoxy•primer

water-based epoxy primer for non-absorbent surfaces

**DESCRIPTION:** Clear, epoxy based, two-component primer, without solvents.

Exhibits high penetrability, increased hardness and resistance to water, acids and alkalis.

**APPLICATIONS:** Used as primer for polyurethane sealants on non-absorbent surfaces.

Applied on surfaces such as aluminium, steel, asphalt, glass, ceramic tiles, old acrylic membranes, etc. Used as primer on concrete surfaces with increased residual moisture.

PACKAGING
4 kg (3 kg A + 1 kg B)
20 kg (15 kg A + 5 kg B)

**CONSUMPTION:** Approximately 0.1-0.2 kg/m<sup>2</sup> in one or two layers.



## pu•primer

### polyurethane primer for absorbent surfaces

**DESCRIPTION:** One-component, clear, solvent-based polyurethane primer which, when applied to porous substrates, creates the appropriate conditions for the adhesion of brushable polyurethane waterproofing membranes.

**APPLICATIONS:** Ready-to-use primer that penetrates deep into the substrate, decreasing its absorbency and increasing its cohesion.

It also acts as a binding layer between the substrate and polyurethane waterproofing membranes. Applied on surfaces such as concrete, plaster, wood, etc.

PACKAGING	ITEMS/PAL.
5 kg metal container	120
17 kg metal container	33

**CONSUMPTION:** Approximately 0.20-0.25 kg/m<sup>2</sup> in one layer.



## fix primer•pu

### one-component polyurethane primer

**DESCRIPTION:** One-component, polyurethane primer to promote adhesion of elastomeric sealants or adhesives (PU•FIX) on porous substrates.

**APPLICATIONS:** It is used on substrates like concrete, light-weight concrete, masonry, natural stones, wood, etc., in order to promote the adhesion of elastomeric sealants or adhesives on them (PU•FIX).

PACKAGING	ITEMS/PAL.
0.50 kg metal container	12

**CONSUMPTION:** Indicatively: 1 kg of primer is enough for approximately 60m of joint.

# 9

## ■ mortar & concrete improvers





## 9. mortar & concrete improvers



### SBR power•latex

high performance polymer admixture for cement-mortars

**DESCRIPTION:** Concentrated emulsion of synthetic polymers based on styrene-butadiene elastomer, with 47% active ingredients, for the improvement of the properties of cement-based mortars. It significantly improves adhesion, watertightness, elasticity, surface hardness and chemical resistance of mortars, while at the same time minimizes drying shrinkage and thus the danger of cracking, and improves workability. SBR POWER•LATEX is APEO and ammonia free in conformity with REACH regulation. It has low content in Volatile Organic Compounds (VOC) in conformity with the Directive 2004/42/EC.

**APPLICATIONS:** Used as an admixture, replacing part of the water required for mixing of cement-based mortars. Ideal for the preparation of renders with increased mechanical properties, as well as increased water resistance, for cement mortars with increased water impermeability and abrasion resistance, as a bonding layer between old and new concrete or mortar, for the preparation of concrete repairing mortars, the improvement of cementitious adhesives and grouts, etc.

PACKAGING	ITEMS/BOX	ITEMS/PAL.
1 kg plastic container	14	504
5 kg plastic container		112
20 kg plastic container		39

**CONSUMPTION:** Depending on the application. Indicatively: 5-10% b.w. of cement.



### latex

enhancing resin for mortars

**DESCRIPTION:** Synthetic aqueous dispersion based on styrene-butadiene elastomer, with 30% active ingredients, for multiple improvements of the properties of cement-based mortars. LATEX is APEO and ammonia free in conformity with REACH regulation. It has low content in Volatile Organic Compounds (VOC) in conformity with the Directive 2004/42/EC.

**APPLICATIONS:** Used as an admixture, replacing part of the water required for mixing cementitious mortars (traditional or premixed), significantly improving their properties. Suitable for masonry mortars, renders, floor-levelling screeds, tile adhesives and grouts. It significantly improves their workability, elasticity, adhesion strength, watertightness and surface hardness.

PACKAGING	ITEMS/BOX	ITEMS/PAL.
1 kg plastic container	14	504
5 kg plastic container		112
20 kg plastic container		39

**CONSUMPTION:** Depending on the application. Indicatively: 10-15% b.w. of cement.



### eco•latex

enhancing polymer resin for mortars

**DESCRIPTION:** Synthetic polymer emulsion, for the improvement of properties of cement-based mortars. Its composition based on ammonia-free and APEO (Alkylphenol ethoxylates)-free synthetic resins makes ECO•LATEX totally friendly towards environment. It has low content in Volatile Organic Compounds (VOC) in conformity with the Directive 2004/42/EC.

**APPLICATIONS:** Used as an admixture, replacing part of the water required for mixing cement mortars (traditional or premixed), improving their properties. Suitable for masonry mortars, renders, floor-levelling screeds. It improves their workability, elasticity, adhesion strength, watertightness and surface hardness.

PACKAGING	ITEMS/BOX	ITEMS/PAL.
1 kg plastic container	14	504
5 kg plastic container		112
20 kg plastic container		39

**CONSUMPTION:** Depending on the application. Indicatively: 10-20% b.w. of cement.



## finoflex

### elastifying admixture for mortars

**DESCRIPTION:** Aqueous dispersion based on acrylic resins (35% active ingredients). APEO and ammonia free in conformity with REACH regulation. It has low content in Volatile Organic Compounds (VOC) in conformity with the Directive 2004/42/EC.

**APPLICATIONS:** Used as an admixture for cement-based brushable sealing mortars and tile adhesives, as well as tile grouts and putties, significantly improving their flexibility, adhesion strength and watertightness.

PACKAGING	ITEMS/BOX	ITEMS/PAL.
1 kg plastic container	14	504
5 kg plastic container		112
20 kg plastic container		39

**CONSUMPTION:** Mixing ratio FINOFLEX:water from 1:1 up to complete replacement of mixing water, depending on the product and the desirable plasticizing degree.



## plastolit

### liquid mortar plasticizer - replaces lime

**DESCRIPTION:** Liquid plasticizer that significantly improves the workability of cementitious mortars. It fully replaces lime.

**APPLICATIONS:** Used in masonry mortars, as well as base-coat and final-coat renders, applied manually or by pumping machine. It significantly improves workability and mechanical strengths.

PACKAGING	ITEMS/BOX	ITEMS/PAL.
1 kg plastic container	14	504
5 kg plastic container		112
20 kg plastic container		39

**CONSUMPTION:** Approx. 200-300 g of PLASTOLIT per 50 kg of cement depending on the application and the quality characteristics of the sand used.



## finolit

### liquid plasticizing admixture for mortars - replaces lime

**DESCRIPTION:** Liquid plasticizer and air-entraining admixture that significantly improves the workability of cement mortars, fully replacing lime.

**APPLICATIONS:** Used for masonry mortars, as well as base-coat and final-coat renders, applied manually or with pumping machine. It significantly improves workability and mechanical strengths.

PACKAGING	ITEMS/BOX	ITEMS/PAL.
1 kg plastic container	14	504
5 kg plastic container		112
20 kg plastic container		39

**CONSUMPTION:**

- 80 g / 40 kg of cement in masonry mortars.
- 120 g / 40 kg of cement in plasters.



## finocure•W

### paraffin-based concrete curing compound

**DESCRIPTION:** Paraffin-based aqueous emulsion, suitable for the protection of fresh concrete from premature drying due to quick evaporation of mixing water.

**APPLICATIONS:** Especially suitable for large concrete surfaces exposed to direct sunlight and under rapid drying conditions caused by wind, low humidity or high ambient temperatures.

Indicatively, it is used in the following cases: concrete slabs, industrial floors (after the application of the industrial floor surface hardener HT 250 HARD TOP), airport pavements.

PACKAGING	ITEMS/PAL.
20 kg plastic container	39

**CONSUMPTION:** 0.15-0.25 kg/m<sup>2</sup>.



## finocure•AC

### acrylic-based concrete curing compound

**DESCRIPTION:** Aqueous emulsion based on acrylic polymers, suitable for the protection of fresh concrete from premature drying due to quick evaporation of mixing water.

**APPLICATIONS:** Especially suitable for large concrete surfaces exposed to direct sunlight and under rapid drying conditions caused by wind, low humidity or high ambient temperatures.

Indicatively, it is used in the following cases: concrete slabs, industrial floors (after the application of the industrial floor surface hardener HT 250 HARD TOP), airport pavements. It is also used to stabilize and seal existing concrete floors and screeds.

PACKAGING	ITEMS/PAL.
20 kg plastic container	39

**CONSUMPTION:** 0.15-0.25 kg/m<sup>2</sup>.



## ad•proof

### waterproofing admixture for mortars & concrete

**DESCRIPTION:** Liquid waterproofing admixture for mortars and concrete, that significantly reduces water permeability and thus increasing the lifespan of the constructions. Classified as water reducing /plasticizing admixture and water resisting admixture for the reduction of capillary absorption according to European standard EN 934-2 Table 2 and Table 9.

**APPLICATIONS:** Used generally in ready-mixed concrete constructions to produce high quality watertight concrete. Ideal for water retaining structures, swimming pools, below ground structures, tunnels, etc.

PACKAGING	ITEMS/PAL.
5 kg plastic container	112
20 kg plastic container	39

**CONSUMPTION:** 0.5% of the cement weight.



## AD•SPL/A•G

### high range concrete superplasticizer

**DESCRIPTION:** New-generation high-performance water reducer and superplasticizer for concrete. It is compatible with all types of cement and provides high water reduction, increased concrete strength, enhanced plasticity and pumpability of the concrete mix, and reduced shrinkage. Classified as high range water reducing /superplasticizing admixture according to European standard EN 934-2 Tables 3.1-3.2.

**APPLICATIONS:** Widely used in concreting, both on construction sites and in concrete production plants. It produces improved concrete mixes that are less sensitive to variations in aggregates and cement types.

PACKAGING	ITEMS/PAL.
20 kg plastic container	39

**CONSUMPTION:** 0.5-1.2% of the cement weight.



## AD•SPL/F

### high performance concrete superplasticizer

**DESCRIPTION:** Powerful superplasticizer based on 3rd generation of polycarboxylate polymer technology. It provides exceptional water reduction in the concrete mix and prolonged maintenance even under high temperatures. Classified as high range water reducing /superplasticizing admixture and set retarding /high range water reducing /superplasticizing admixture according to European standard EN 934-2 Tables 3.1-3.2 and Tables 11.1-11.2.

**APPLICATIONS:** Especially suitable for site-batched and ready-mix concrete producing plastic and easy-to-handle concrete mixes with better casting and compaction properties. Ideal for concrete of high specifications with increased demands for water reduction and prolonged workability. Suitable for high distance concrete transportations and under high temperatures. Suitable for shotcrete.

PACKAGING	ITEMS/PAL.
20 kg plastic container	39

**CONSUMPTION:** 0.4-1.6% of the cement weight.



ISO 9001:2015 - quality management system



ISO 14001:2015 - environmental management system



ISO 45001:2018 - occupational health and safety management system

- Products should be used by qualified technicians only.
- Users of **FINOMIX** products should consult the products' properties at all time.
- Recommendations on the application and intended use of the **FINOMIX** range are based on the company's expertise provided that the products are stored, used and applied according to the company's recommendation under normal conditions.
- The displayed consumptions are the result of measurements performed under real conditions, however they should be treated as indicative only.
- Rendering of colours in the charts is only indicative.



More than **40** YEARS

 **FINOBETON<sup>SA</sup>**  
PREMIXED CONCRETE - FLOOR SCREEDS - ASPHALT PRODUCTS

*One step ahead*

  
**FINOMIX<sup>®</sup>**  
DRY MORTARS  
*Building trusting relationships*

 **FINOMARM<sup>®</sup>**

MARBLE - STONE - GRANITE

*Natural and Valuable*

 **MAXOP<sup>A.E.</sup>**

# 26



## **FINOMIX**<sup>®</sup> DRY MORTARS

### **FINOBETON S.A. Head Office**

16 Pithagora Str., 73134 Chania, Crete, Greece  
tel. +3028210 27150

### **Chania Distribution Center**

Chordaki, Chania, Greece, tel. +3028214 40500

### **Herakleion Distribution Center**

150 Irinis & Filias Ave.  
Malades Industrial Park, Herakleion, Greece  
tel. +302810 545580

### **Athens Distribution Center**

40, 28th Oktovriou Str.  
18233 Ag. I. Rentis, Athens, Greece  
tel. +30210 4915140

[info@finomix.gr](mailto:info@finomix.gr)



[www.finomix.gr](http://www.finomix.gr)

